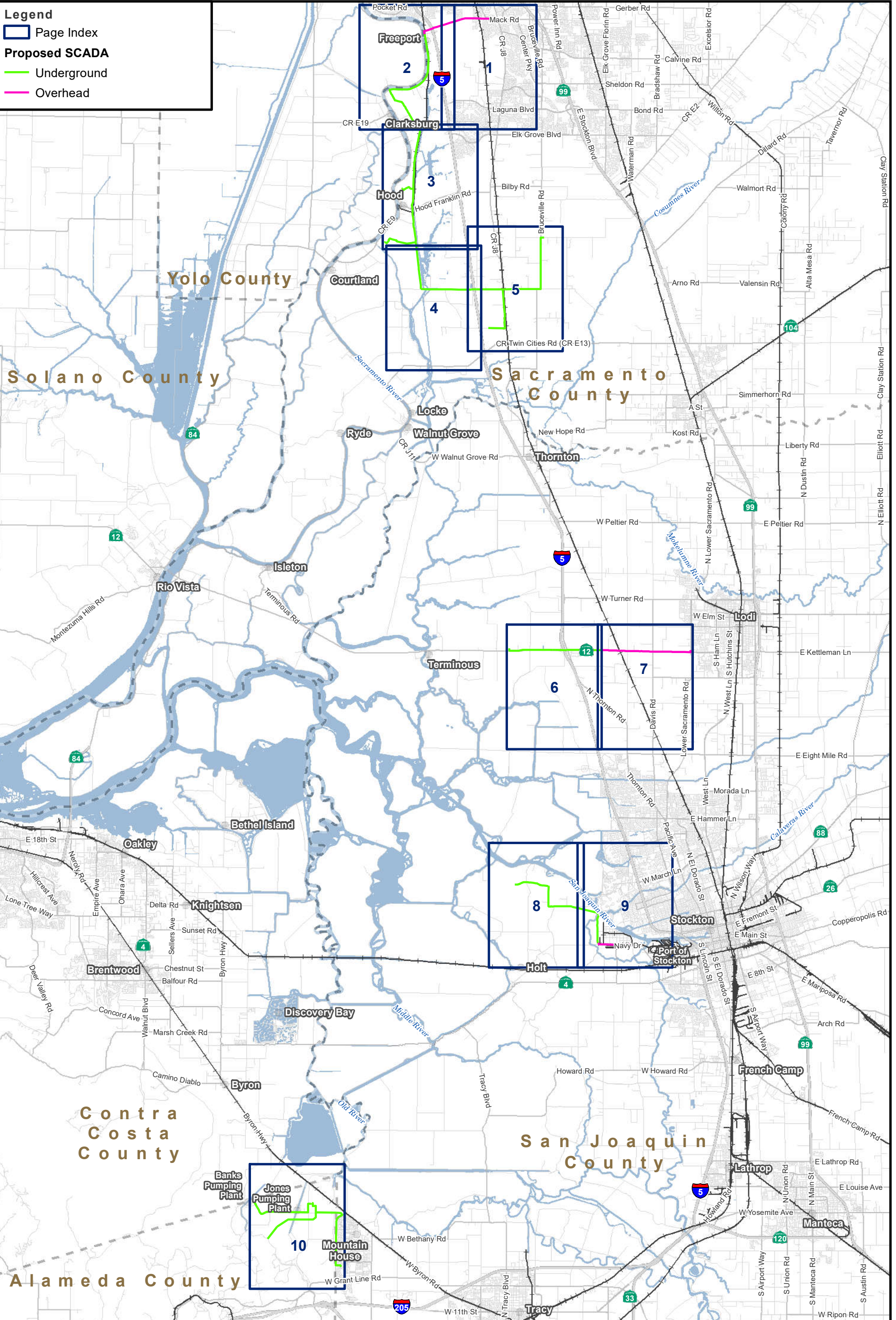


Legend

- Page Index
- Proposed SCADA
 - Underground
 - Overhead

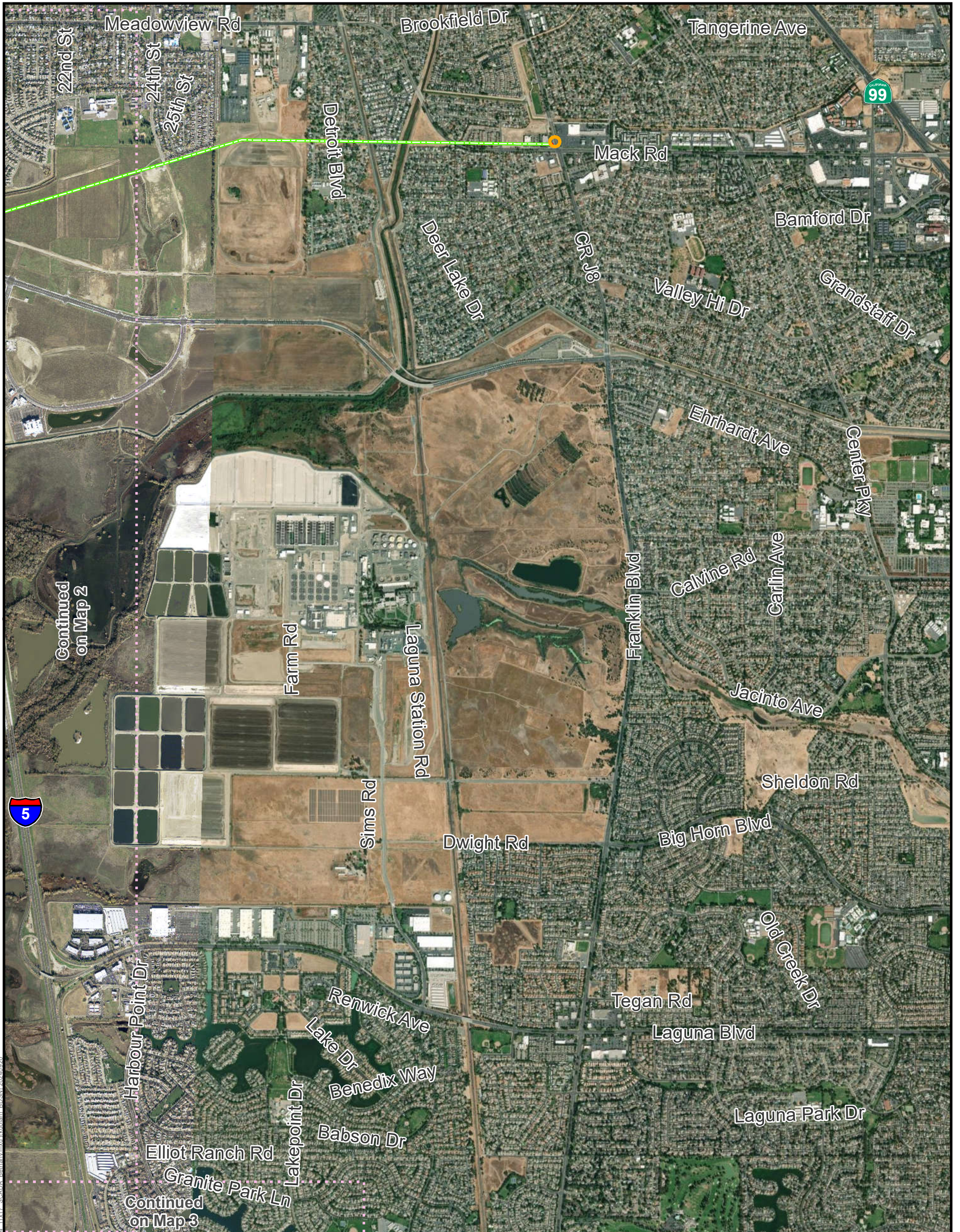


DCA Draft example mapbook for discussion purposes only.
 This mapbook is a scaled representation of the GIS data and only shows major facilities.
 For Illustration Purposes Only



Key Map
 Delta Conveyance Project – SCADA
 September 2024

Data Source: DCA, DWR



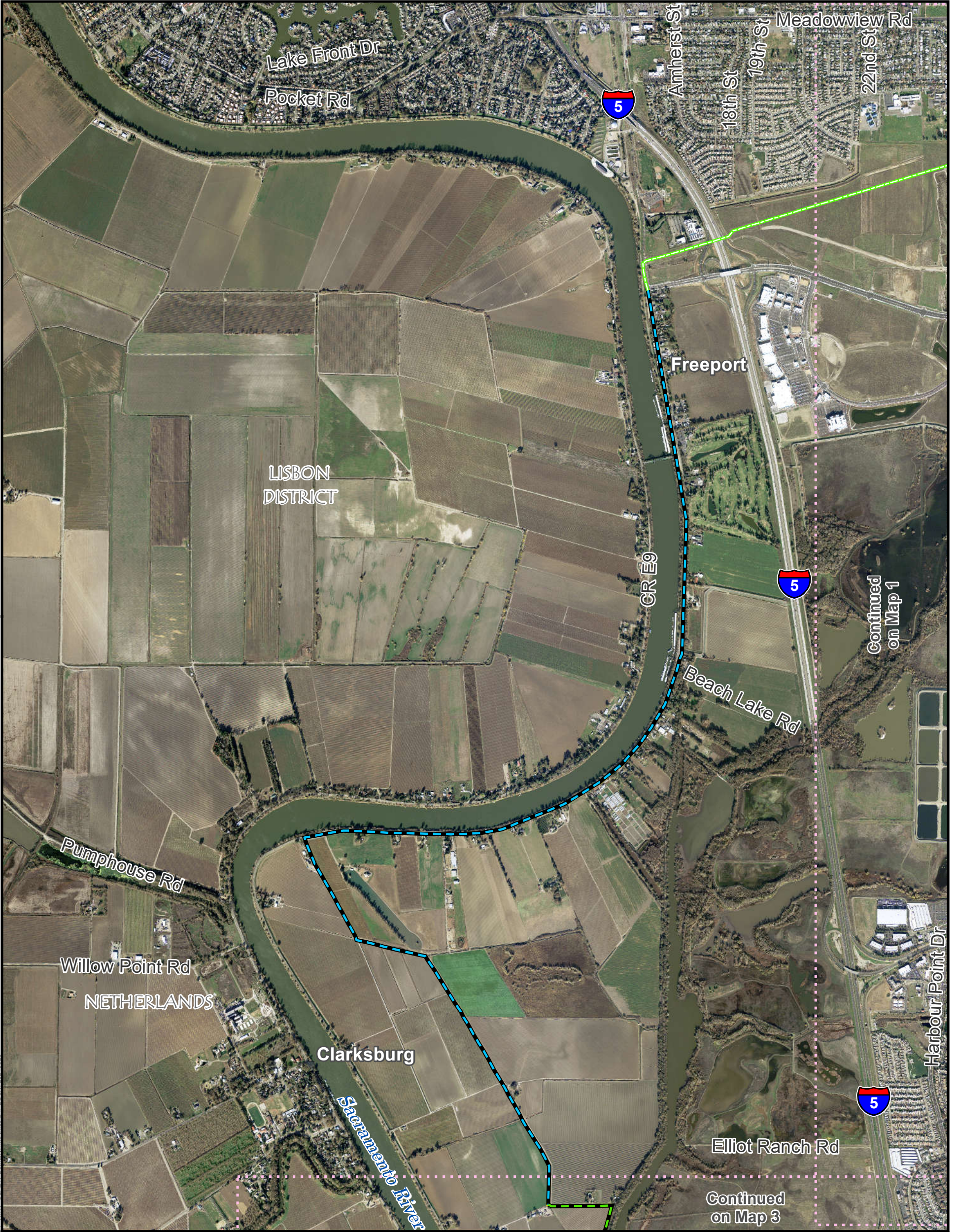
Legend

- Page Index
- Connection to Existing Router
- Permanent Subsurface Impact
- Permanent Surface Impact
- Temporary Surface Impact
- New Line on Existing Poles

SCADA Proposed Fiber Routes
Proposed Overhead SCADA

Draft example mapbook for discussion purposes only.
This mapbook is a scaled representation of the GIS data and only shows major facilities.

Data Source: DCA, DWR

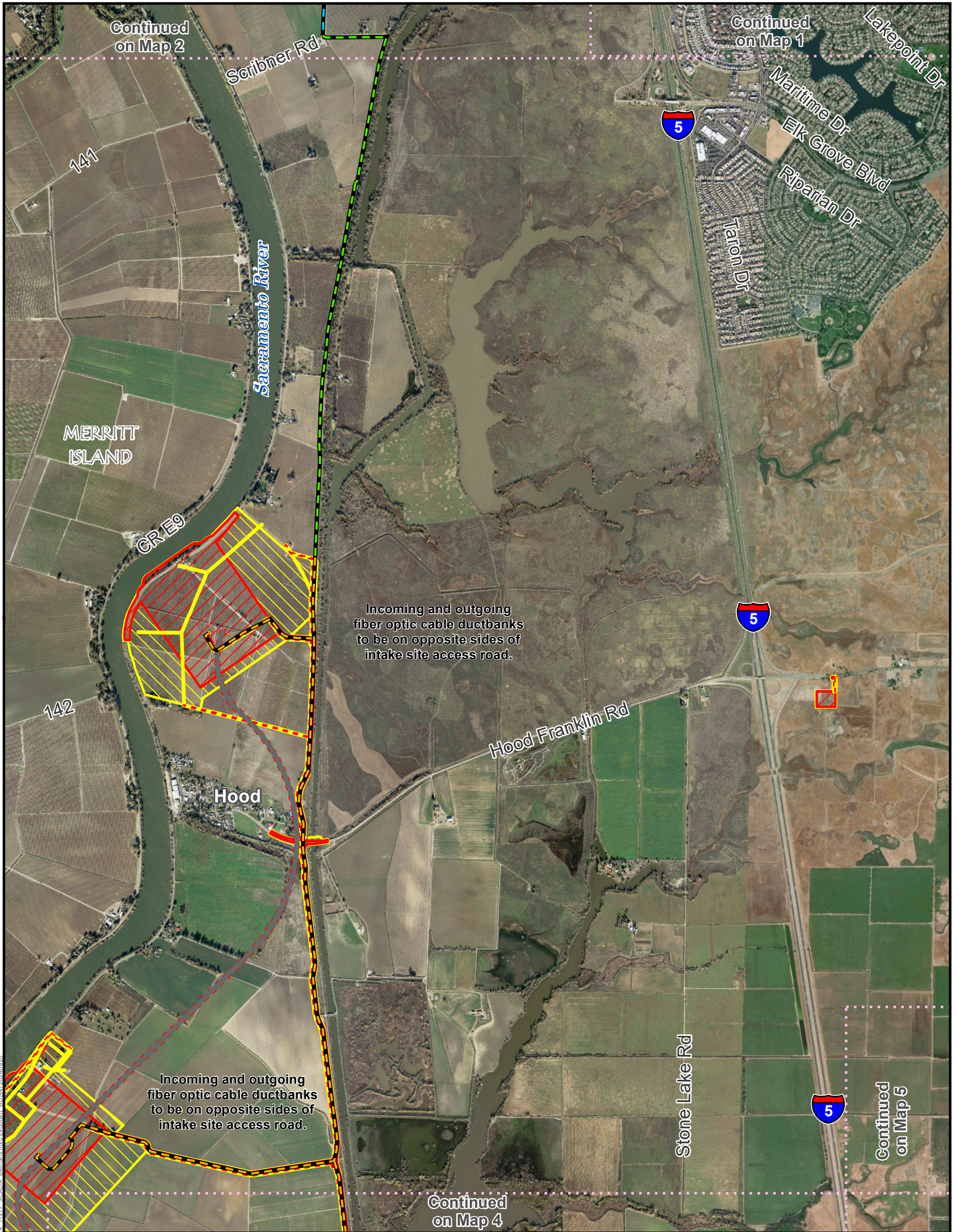


Legend

- Page Index
- SCADA Proposed Fiber Routes**
- Proposed Underground SCADA**
 - Within Existing Roadway
 - Outside Roadway
- Proposed Overhead SCADA**
 - New Line on Existing Poles
- Permanent Subsurface Impact
- Permanent Surface Impact
- Temporary Surface Impact

**Draft example mapbook for discussion purposes only.
This mapbook is a scaled representation of the
GIS data and only shows major facilities.**





- Legend**
- Page Index
 - SCADA Proposed Fiber Routes**
 - Proposed Underground SCADA**
 - Within Existing Roadway
 - Within Proposed Roadway Improvements
 - Outside Roadway
 - Permanent Subsurface Impact
 - Permanent Surface Impact
 - Temporary Surface Impact

Draft example mapbook for discussion purposes only. This mapbook is a scaled representation of the GIS data and only shows major facilities.

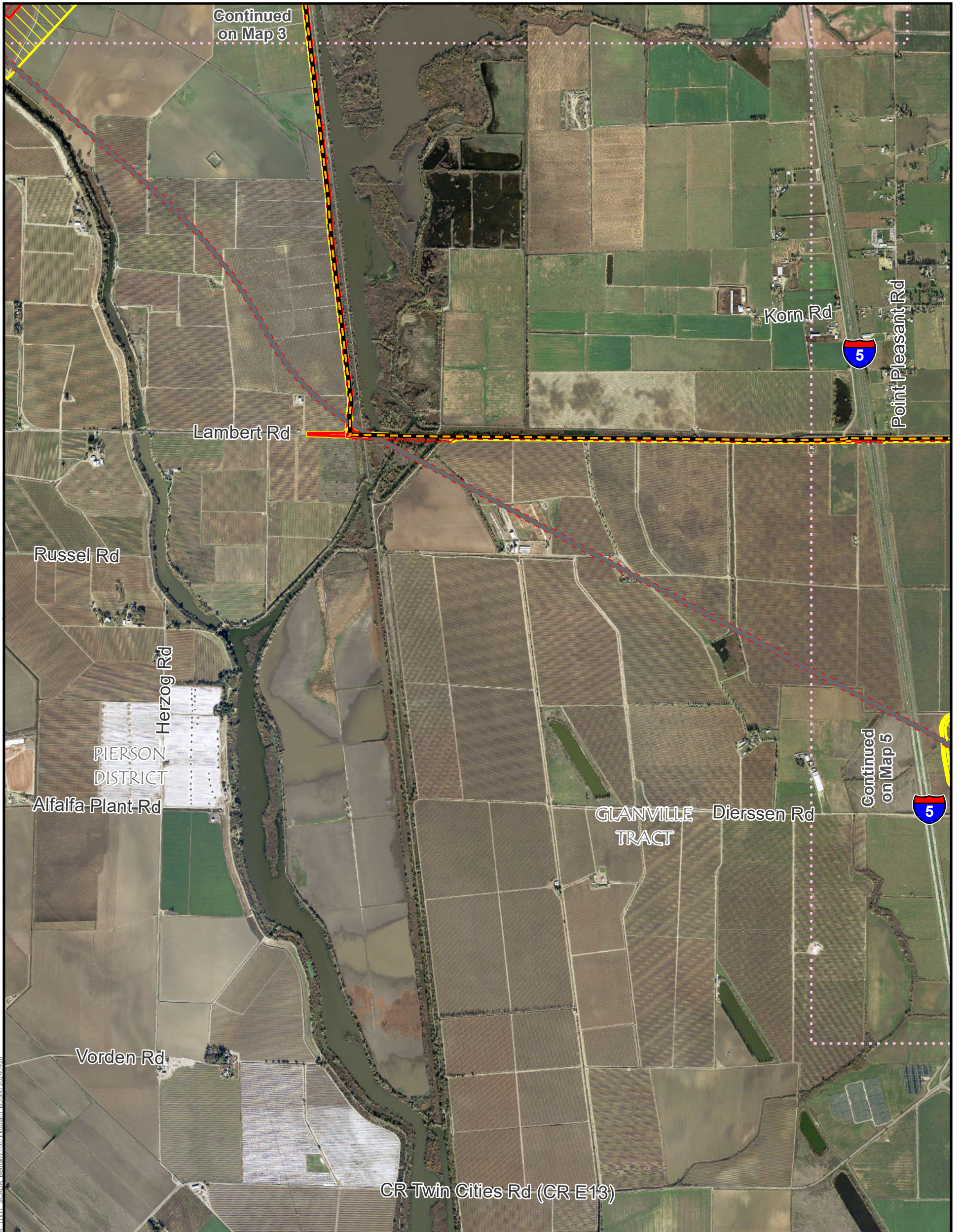


For Illustration Purposes Only



Sheet 3 of 10
Delta Conveyance Project – SCADA
September 2024

Data Source: DCA, DWR



Legend

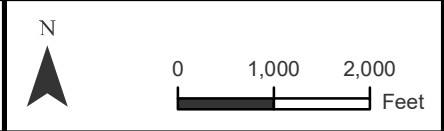
- Page Index
- SCADA Proposed Fiber Routes**
- Proposed Underground SCADA**
- Within Proposed Roadway Improvements

- Permanent Subsurface Impact
- Permanent Surface Impact
- Temporary Surface Impact

Draft example mapbook for discussion purposes only.
This mapbook is a scaled representation of the GIS data and only shows major facilities.

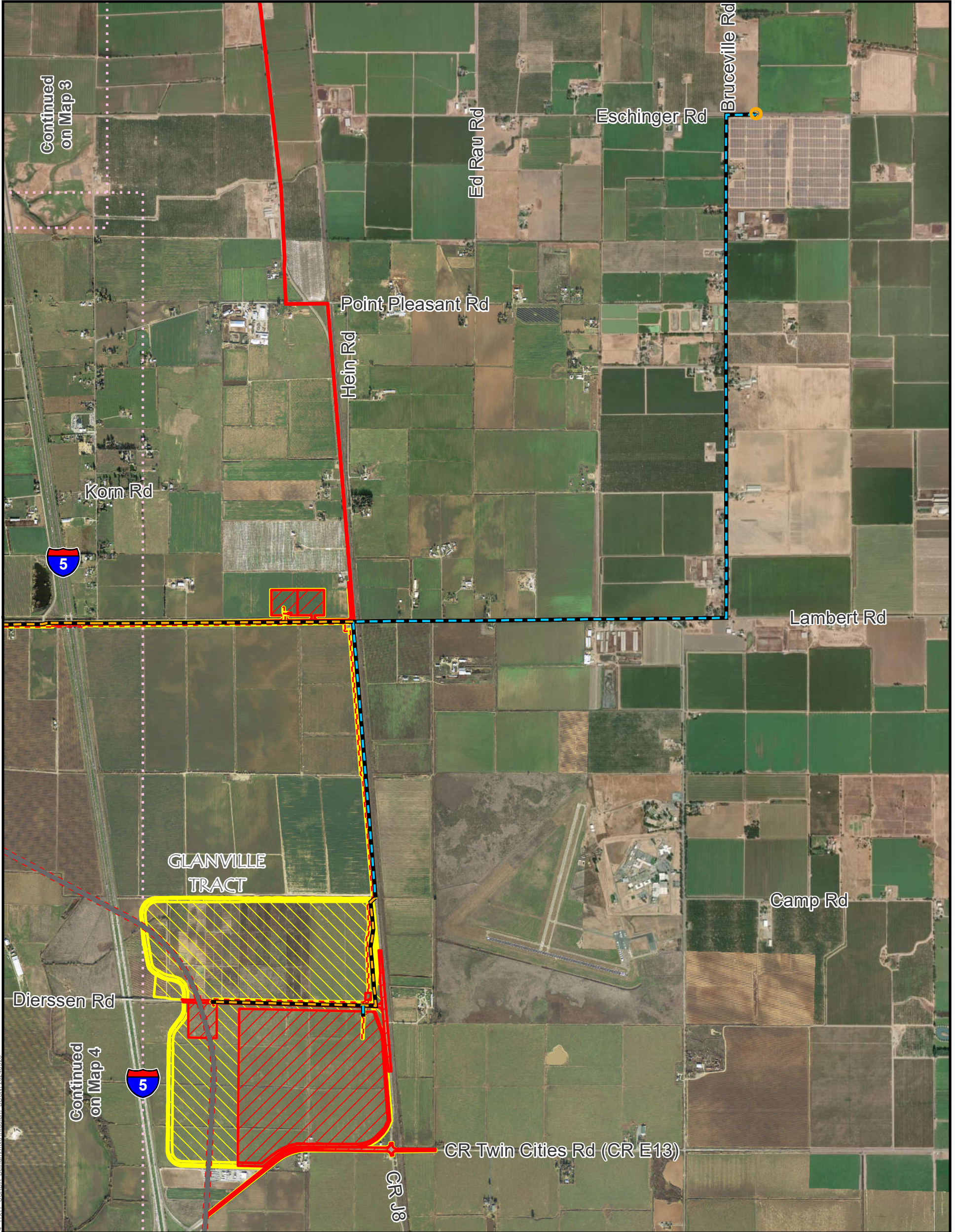


For Illustration Purposes Only



Sheet 4 of 10
 Delta Conveyance Project – SCADA
 September 2024

Data Source: DCA, DWR



Legend

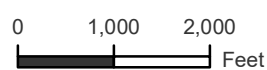
- Page Index
- Connection to Existing Router
- Permanent Subsurface Impact
- Permanent Surface Impact
- Temporary Surface Impact
- Within Proposed Roadway Improvements
- Outside Roadway

**SCADA Proposed Fiber Routes
Proposed Underground SCADA**

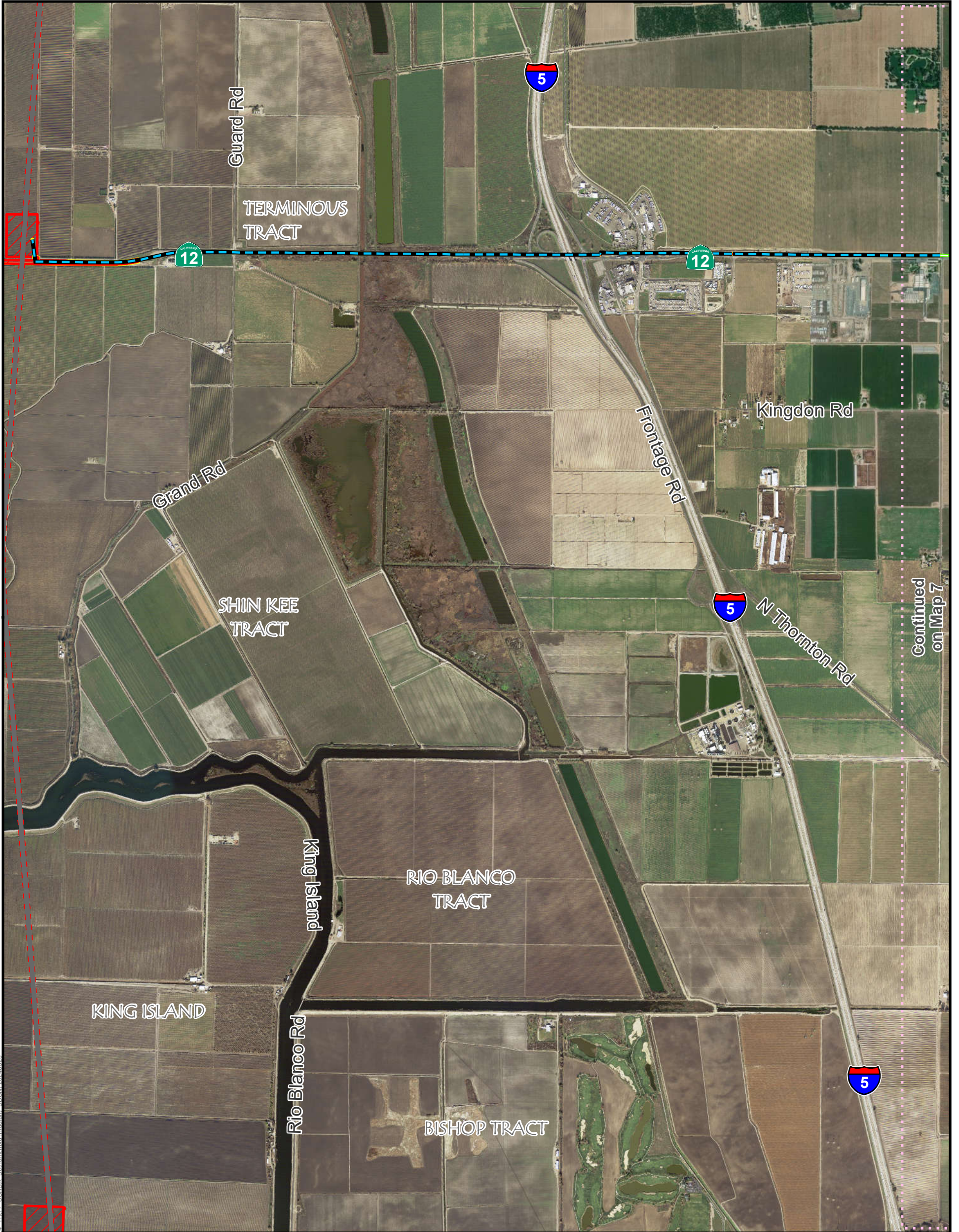
**Draft example mapbook for discussion purposes only.
This mapbook is a scaled representation of the
GIS data and only shows major facilities.**



For Illustration Purposes Only



Data Source: DCA, DWR



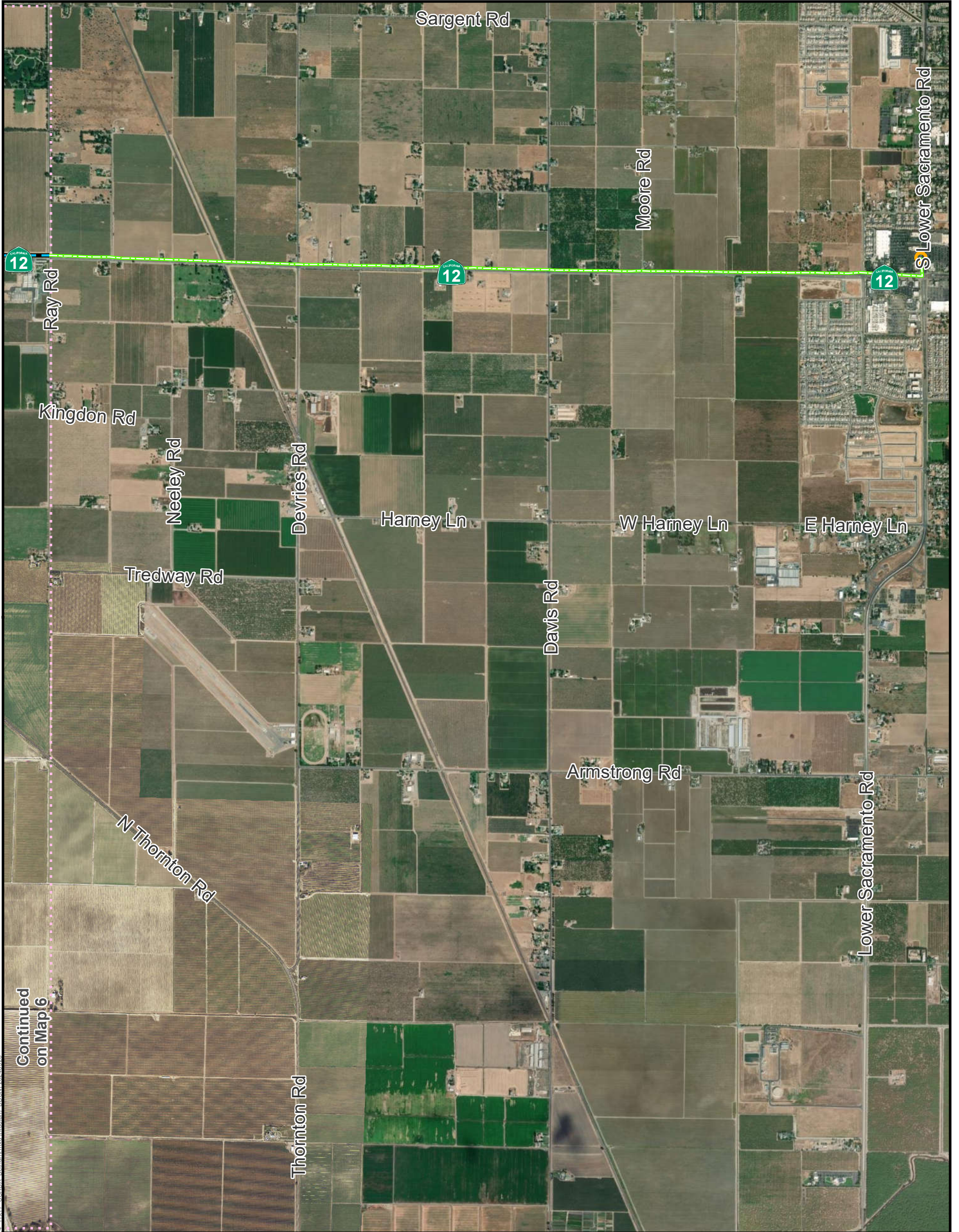
Continued on Map 7

Legend



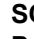
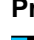






- Page Index
- Permanent Subsurface Impact
- Permanent Surface Impact
- SCADA Proposed Fiber Routes
- Permanent Surface Impact
- Temporary Surface Impact
- Proposed Underground SCADA
- Outside Roadway
- Proposed Overhead SCADA
- New Line on Existing Poles

Draft example mapbook for discussion purposes only. This mapbook is a scaled representation of the GIS data and only shows major facilities.



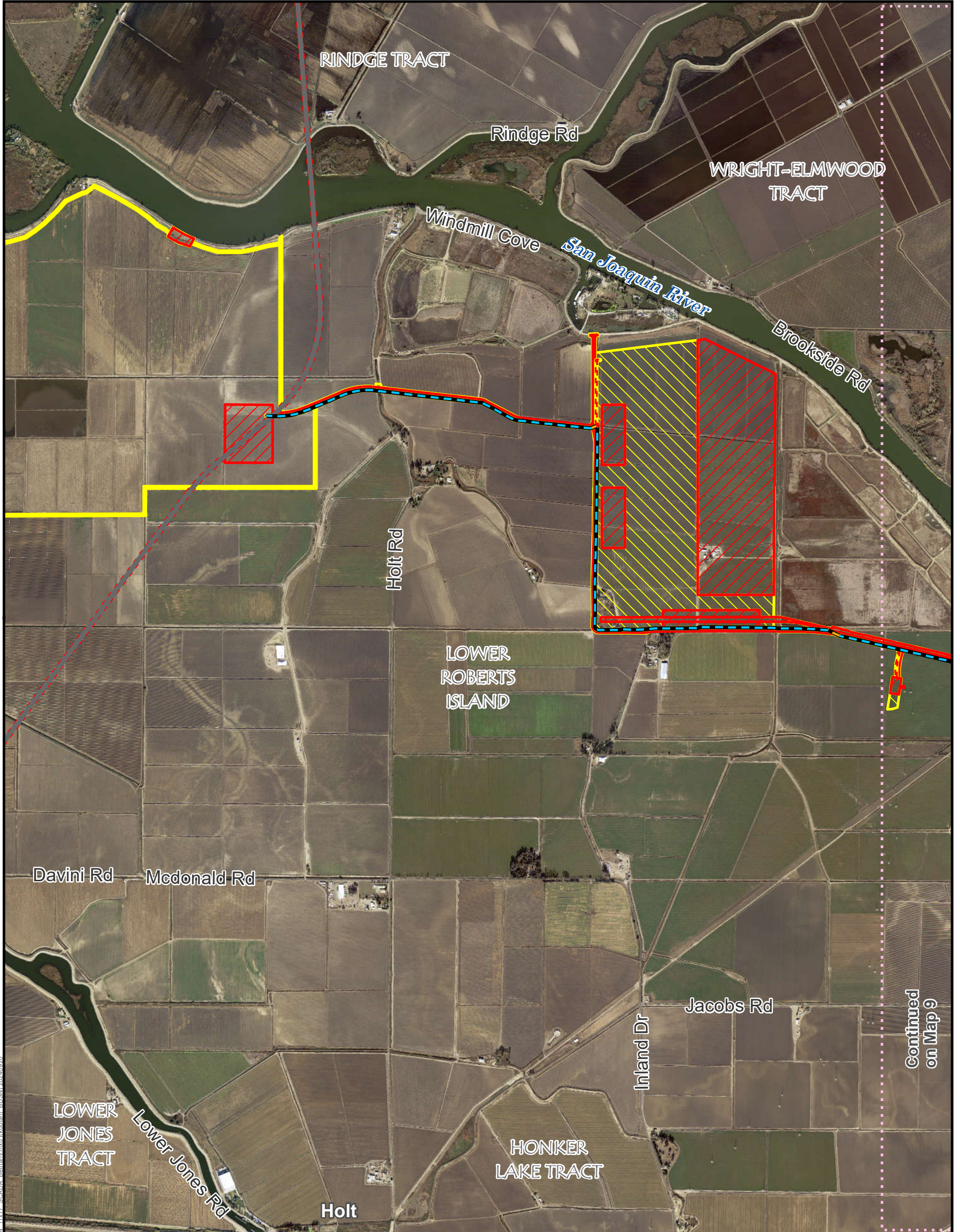


Legend

-  Page Index
-  Connection to Existing Router
-  SCADA Proposed Fiber Routes
-  Proposed Underground SCADA
-  Outside Roadway
-  Proposed Overhead SCADA
-  New Line on Existing Poles
-  Permanent Subsurface Impact
-  Permanent Surface Impact
-  Temporary Surface Impact

**Draft example mapbook for discussion purposes only.
This mapbook is a scaled representation of the
GIS data and only shows major facilities.**





Continued on Map 9

Legend

- ⋯ Page Index
- SCADA Proposed Fiber Routes**
- Proposed Underground SCADA**
- Within Proposed Roadway Improvements
- Outside Roadway
- Permanent Subsurface Impact
- Permanent Surface Impact
- Temporary Surface Impact

Draft example mapbook for discussion purposes only. This mapbook is a scaled representation of the GIS data and only shows major facilities.



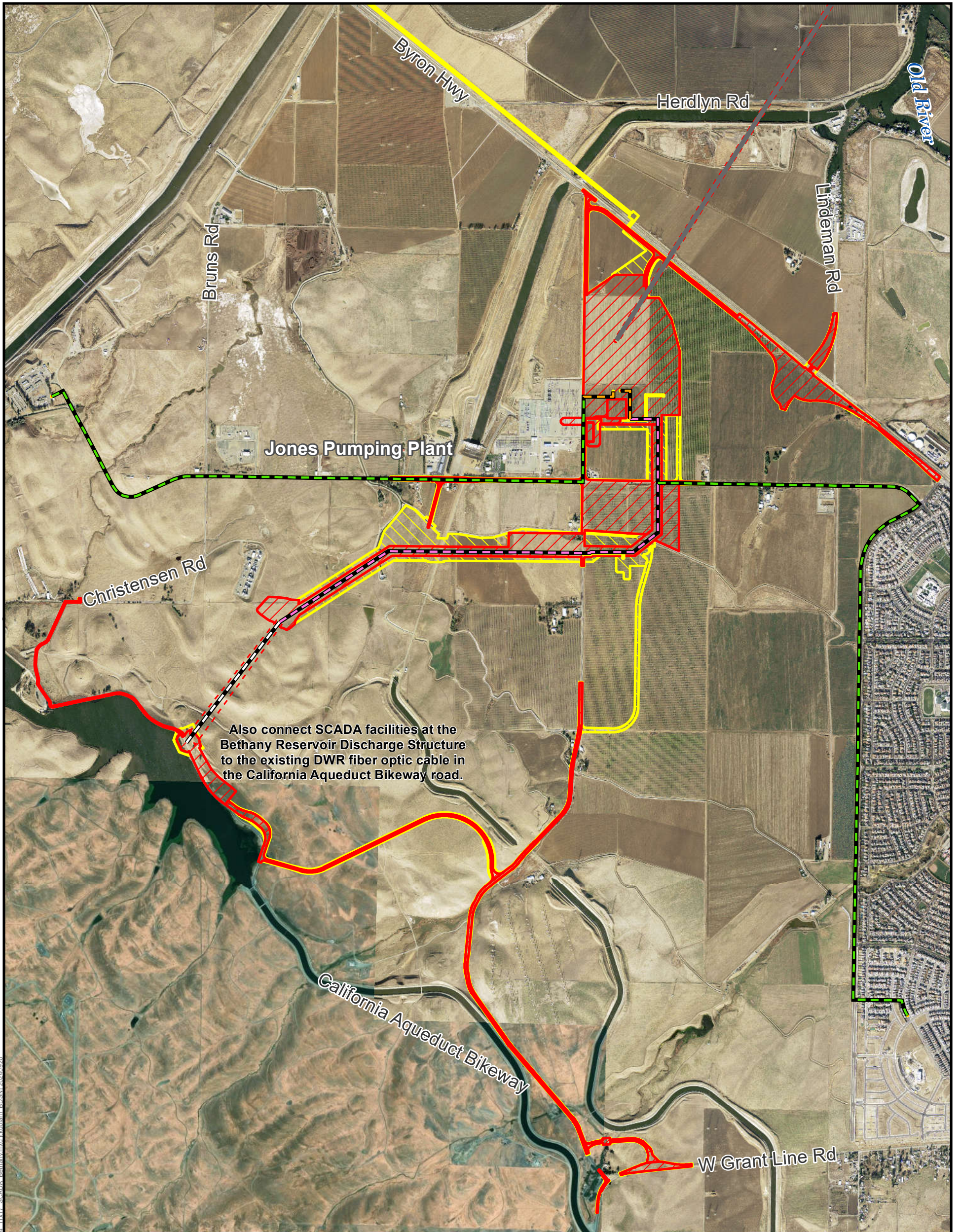
Data Source: DCA, DWR



- Legend**
- ⋯ Page Index
 - Connection to Existing Router
 - SCADA Proposed Fiber Routes**
 - Proposed Underground SCADA**
 - Within Proposed Roadway Improvements
 - Outside Roadway
 - Proposed Overhead SCADA**
 - New Line on Existing Poles
 - Permanent Subsurface Impact
 - Permanent Surface Impact
 - Temporary Surface Impact

Draft example mapbook for discussion purposes only.
This mapbook is a scaled representation of the GIS data and only shows major facilities.

Data Source: DCA, DWR



Also connect SCADA facilities at the Bethany Reservoir Discharge Structure to the existing DWR fiber optic cable in the California Aqueduct Bikeway road.

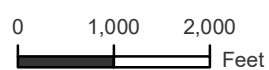
Legend

- Page Index
- SCADA Proposed Fiber Routes**
- Within Existing Roadway
- Within Proposed Roadway Improvements
- Common Trench with Aqueduct
- Trenchless Installation
- Permanent Subsurface Impact
- Permanent Surface Impact
- Temporary Surface Impact

Draft example mapbook for discussion purposes only. This mapbook is a scaled representation of the GIS data and only shows major facilities.



For Illustration Purposes Only



Sheet 10 of 10
Delta Conveyance Project – SCADA
September 2024