

Legend

- Page Index
- Tunnel

Proposed Power

- Underground - Permanent
- Underground - Temporary
- Overhead - Permanent
- Overhead - Temporary
- Abandoned

DCA Draft example mapbook for discussion purposes only.
 DELTA CONVEYANCE DESIGN & CONSTRUCTION AUTHORITY
 This mapbook is a scaled representation of the GIS data and only shows major facilities.
 For Illustration Purposes Only

N

0 3.25
Miles

Key Map
 Delta Conveyance Project Power Supply
 September 2024

Data Source: DCA, DWR

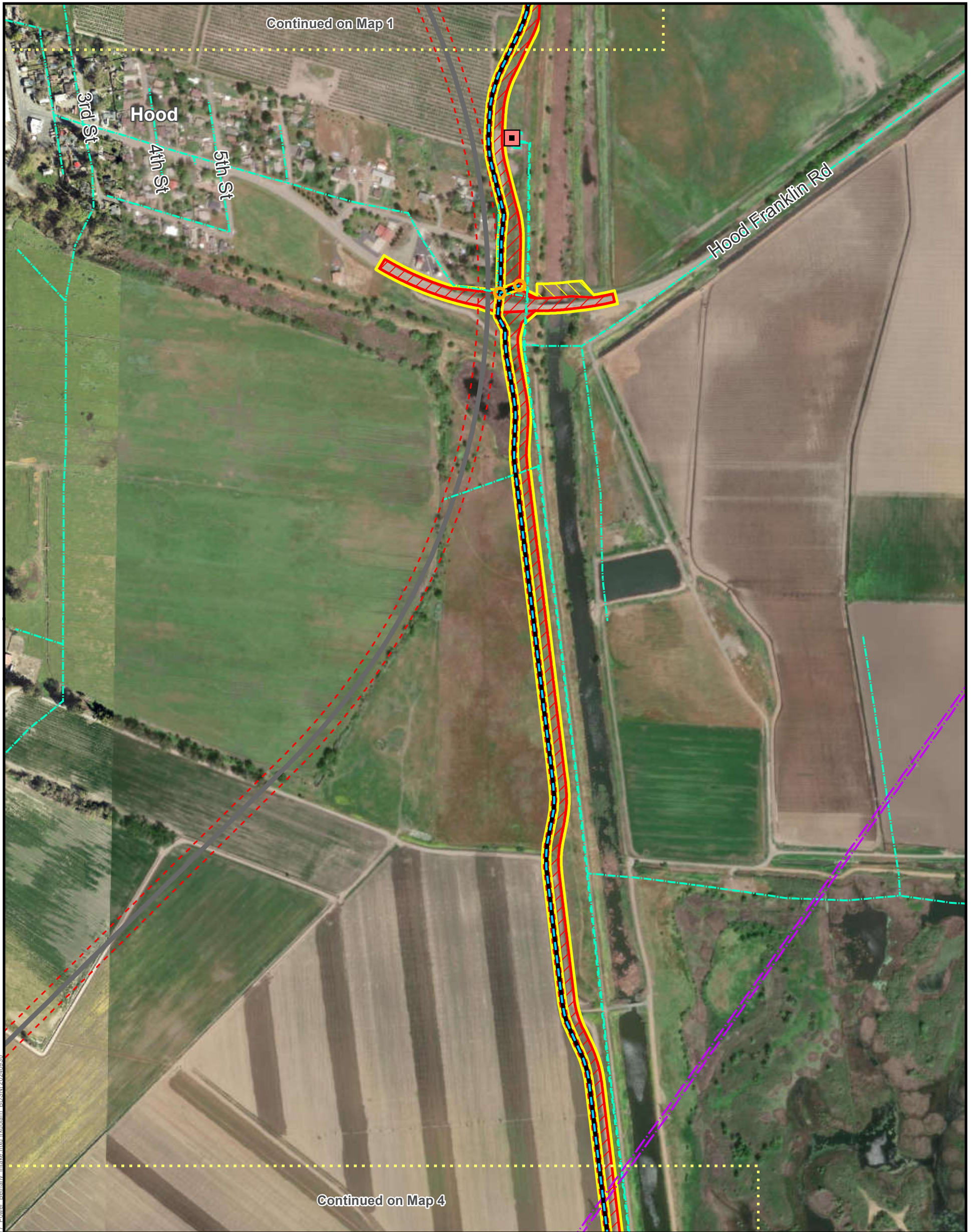


Continued on Map 2

- | | | |
|--|--|---|
| <ul style="list-style-type: none"> - - - - - Page Index ● Connection to Existing Overhead Proposed Substation Abandoned Existing Power Proposed Underground Power Within Proposed Roadway Outside Roadway Relocated Non-Project Power | <ul style="list-style-type: none"> Existing Power PG&E Low Voltage 21-22 kV SMUD Low Voltage 12 kV | <ul style="list-style-type: none"> Tunnel Permanent Subsurface Impact Permanent Surface Impact Temporary Surface Impact |
|--|--|---|

**Draft example mapbook for discussion purposes only.
This mapbook is a scaled representation of the
GIS data and only shows major facilities.**

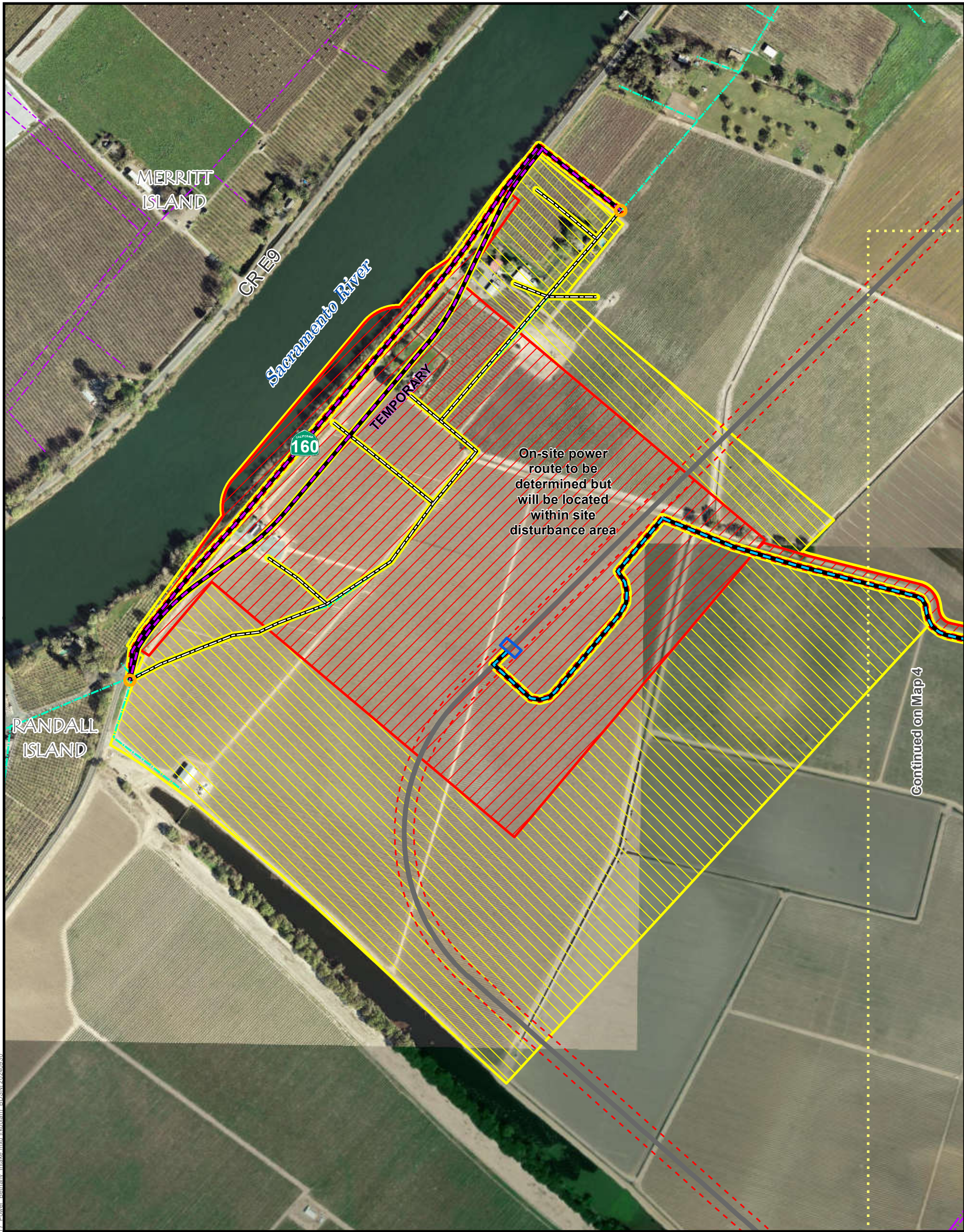




- ⋯ Page Index
- Existing Substation
- Connection to Existing Overhead
- Proposed Underground Power**
- Outside Roadway
- Existing Power**
- PG&E High Voltage**
- 115 kV
- SMUD Low Voltage**
- 12 kV
- SMUD High Voltage**
- 60-70 kV
- Tunnel
- Permanent Subsurface Impact
- Permanent Surface Impact
- Temporary Surface Impact

**Draft example mapbook for discussion purposes only.
This mapbook is a scaled representation of the
GIS data and only shows major facilities.**

Data Source: DCA, DWR



- | | | |
|---|--|--|
| <ul style="list-style-type: none"> ■ Page Index ● Connection to Existing Overhead Proposed Substation Abandoned Existing Power Proposed Underground Power Outside Roadway Relocated Non-Project Power | <ul style="list-style-type: none"> Existing Power PG&E Low Voltage 21-22 kV PG&E High Voltage 115 kV SMUD Low Voltage 12 kV | <ul style="list-style-type: none"> Tunnel Permanent Subsurface Impact Permanent Surface Impact Temporary Surface Impact |
|---|--|--|

**Draft example mapbook for discussion purposes only.
This mapbook is a scaled representation of the
GIS data and only shows major facilities.**

Data Source: DCA, DWR



- | | | | |
|---|---|--------|-----------------------------|
| Page Index | Existing Power
PG&E High Voltage
115 kV | Tunnel | Permanent Subsurface Impact |
| Proposed Switching Station | SMUD Low Voltage
12 kV | | Permanent Surface Impact |
| Proposed Underground Power
Within Proposed Roadway | SMUD High Voltage
60-70 kV | | Temporary Surface Impact |
| Outside Roadway | | | |

**Draft example mapbook for discussion purposes only.
This mapbook is a scaled representation of the
GIS data and only shows major facilities.**





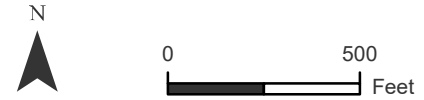
Continued on Map 6

- Page Index
- Proposed Underground Power
- Outside Roadway
- Tunnel
- Existing Power SMUD Low Voltage 12 kV
- Existing Power SMUD High Voltage 60-70 kV
- Permanent Subsurface Impact
- Permanent Surface Impact
- Temporary Surface Impact

Draft example mapbook for discussion purposes only. This mapbook is a scaled representation of the GIS data and only shows major facilities.

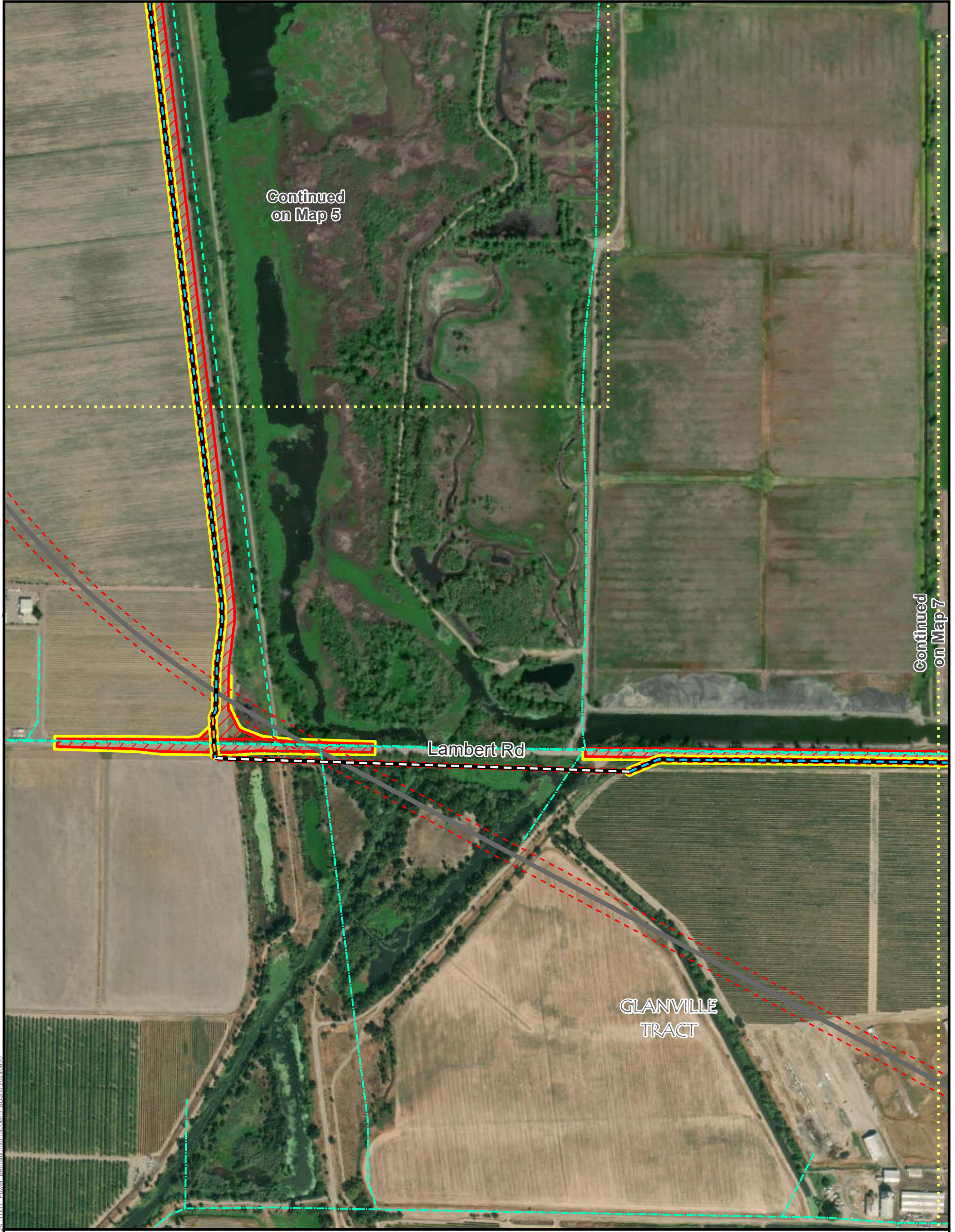


For Illustration Purposes Only



Sheet 5 of 26
Delta Conveyance Project Power Supply
September 2024

Data Source: DCA, DWR



Continued
on Map 5

Continued
on Map 7

Lambert Rd

GLANVILLE
TRACT

- Page Index
- Proposed Underground Power**
 - Within Proposed Roadway
 - Outside Roadway
 - Trenchless Installation
- Existing Power**
 - SMUD Low Voltage 12 kV
 - SMUD High Voltage 60-70 kV
- Tunnel
- Permanent Subsurface Impact
- Permanent Surface Impact
- Temporary Surface Impact

Draft example mapbook for discussion purposes only.
This mapbook is a scaled representation of the GIS data and only shows major facilities.



For Illustration Purposes Only



Sheet 6 of 26
 Delta Conveyance Project Power Supply
 September 2024

Data Source: DCA, DWR



Continued on Map 6

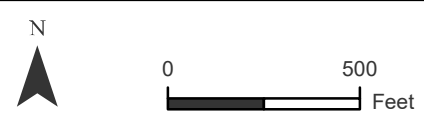
Continued on Map 8

- ⋯ Page Index
- Proposed Underground Power
- Outside Roadway
- Existing Power
- SMUD Low Voltage
- 12 kV
- SMUD High Voltage
- 60-70 kV
- Tunnel
- Permanent Subsurface Impact
- Permanent Surface Impact
- Temporary Surface Impact

Draft example mapbook for discussion purposes only. This mapbook is a scaled representation of the GIS data and only shows major facilities.

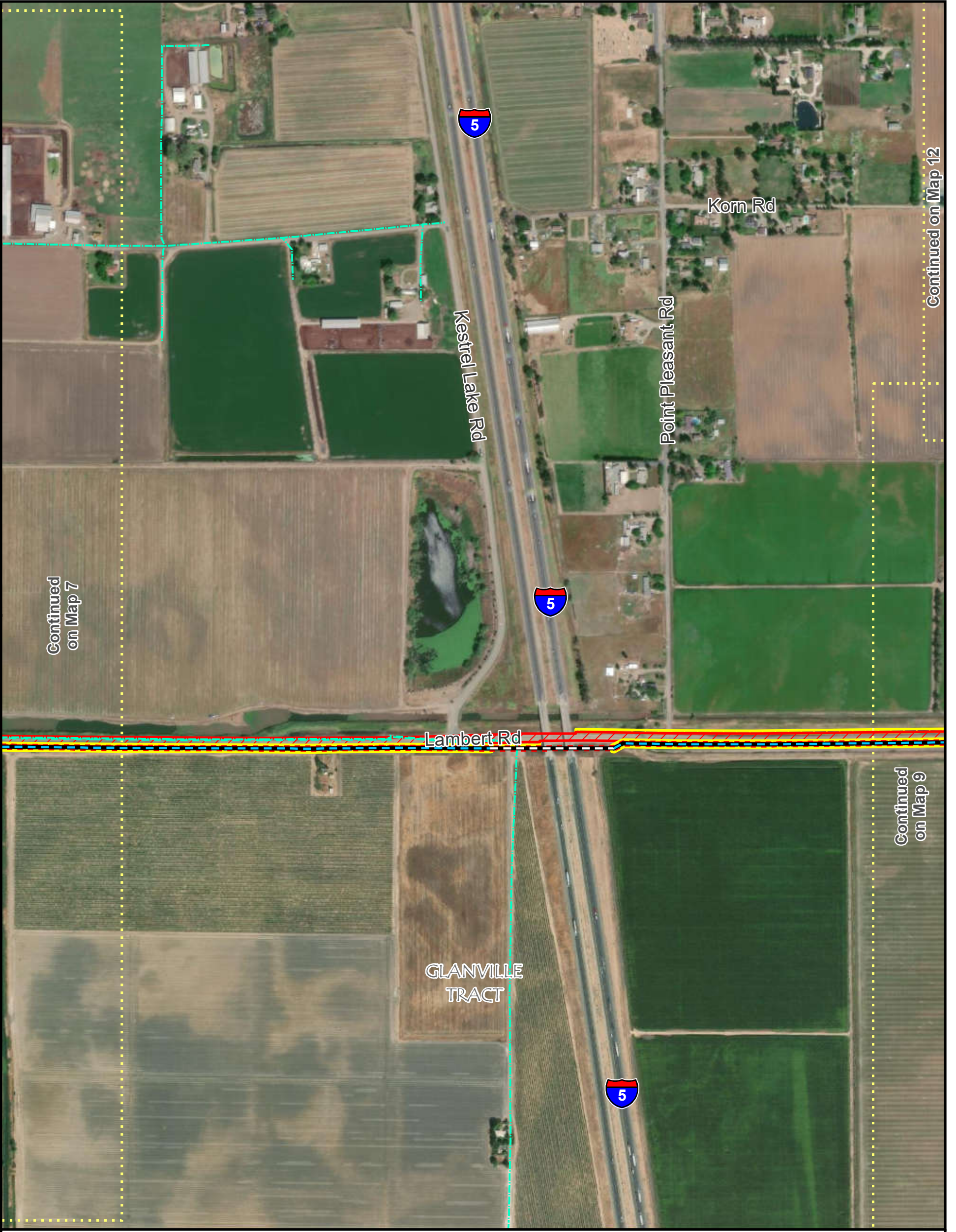


For Illustration Purposes Only



Sheet 7 of 26
Delta Conveyance Project Power Supply
September 2024

Data Source: DCA, DWR



Continued on Map 7

Continued on Map 12

Continued on Map 9

- | | | |
|--|---|--|
| <ul style="list-style-type: none"> Page Index Proposed Underground Power Outside Roadway Trenchless Installation | <ul style="list-style-type: none"> Existing Power SMUD Low Voltage 12 kV SMUD High Voltage 60-70 kV | <ul style="list-style-type: none"> Permanent Subsurface Impact Permanent Surface Impact Temporary Surface Impact |
|--|---|--|

Draft example mapbook for discussion purposes only. This mapbook is a scaled representation of the GIS data and only shows major facilities.



For Illustration Purposes Only



Sheet 8 of 26
Delta Conveyance Project Power Supply
September 2024

Data Source: DCA, DWR

Continued
on Map 12

On-site power
route to be
determined but
will be located
within site
disturbance area







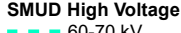








Lambert Rd

Franklin Blvd.

CR 18

GLANVILLE
TRACT

Continued on Map 13

- | | | | |
|--|--|---|---|
|  Page Index |  Existing Substation |  Existing Power SMUD High Voltage 60-70 kV |  Permanent Subsurface Impact |
|  Connection to Proposed Overhead, Existing Pole |  Proposed Switching Station |  60-70 kV |  Permanent Surface Impact |
|  Proposed Underground Power |  Within Existing Roadway |  Temporary Surface Impact | |
|  Within Proposed Roadway |  Outside Roadway | | |
|  Proposed Overhead Power |  New Line on Existing Poles | | |

Draft example mapbook for discussion purposes only.
This mapbook is a scaled representation of the GIS data and only shows major facilities.



For Illustration Purposes Only



0 500 Feet

Sheet 9 of 26
Delta Conveyance Project Power Supply
September 2024

T:\AWG\GIS\GIS_08_00\GISRequest_1\FID\Deliverable_1\FID\ENG-188_24\ENG188_24_11x17_Power_Bethany.mxd (local) - BDSN 20240930



Continued on Map 11

- Page Index
- Improvements to Existing Substation
- Proposed Overhead Power**
- New Line on Existing Poles
- Existing Power**
- SMUD High Voltage**
- 60-70 kV
- 230KV
- Permanent Subsurface Impact
- Permanent Surface Impact
- Temporary Surface Impact

**Draft example mapbook for discussion purposes only.
This mapbook is a scaled representation of the
GIS data and only shows major facilities.**



Continued on Map 10

Core Rd

Franklin Blvd.

CR-18

Continued on Map 12

- Page Index
- Proposed Overhead Power
- New Line on Existing Poles
- Existing Power**
- SMUD High Voltage**
- 60-70 kV
- 230KV
- Permanent Subsurface Impact
- Permanent Surface Impact
- Temporary Surface Impact

**Draft example mapbook for discussion purposes only.
This mapbook is a scaled representation of the
GIS data and only shows major facilities.**



For Illustration Purposes Only



Sheet 11 of 26
Delta Conveyance Project Power Supply
September 2024

Data Source: DCA, DWR



- Page Index
- Proposed Overhead Power**
- New Line on Existing Poles
- Existing Power**
- SMUD High Voltage**
- 60-70 kV
- Permanent Subsurface Impact
- Permanent Surface Impact
- Temporary Surface Impact

**Draft example mapbook for discussion purposes only.
This mapbook is a scaled representation of the
GIS data and only shows major facilities.**



For Illustration Purposes Only



Sheet 12 of 26
Delta Conveyance Project Power Supply
September 2024

Data Source: DCA, DWR

Continued on Map 9



GLANVILLE TRACT

On-site power route to be determined but will be located within site disturbance area

- ⋯ Page Index
- Proposed Substation
- Proposed Underground Power
 - Within Existing Roadway
 - Within Proposed Roadway
 - Outside Roadway
- Existing Power
- SMUD High Voltage
- 60-70 kV
- Tunnel
- Permanent Subsurface Impact
- Permanent Surface Impact
- Temporary Surface Impact

Draft example mapbook for discussion purposes only. This mapbook is a scaled representation of the GIS data and only shows major facilities.



For Illustration Purposes Only



Sheet 13 of 26
Delta Conveyance Project Power Supply
September 2024

Data Source: DCA, DWR















On-site power route to be determined but will be located within site disturbance area

NEW HOPE TRACT

Blossom Rd

W Walnut Grove Rd



-  Connection to Existing Overhead
-  Proposed Metering Area
-  Metering Area
-  Proposed Underground Power
-  Within Proposed Roadway
-  Existing Power
-  PG&E Low Voltage
-  11 kV
-  Tunnel
-  Permanent Subsurface Impact
-  Permanent Surface Impact
-  Temporary Surface Impact

Draft example mapbook for discussion purposes only. This mapbook is a scaled representation of the GIS data and only shows major facilities.

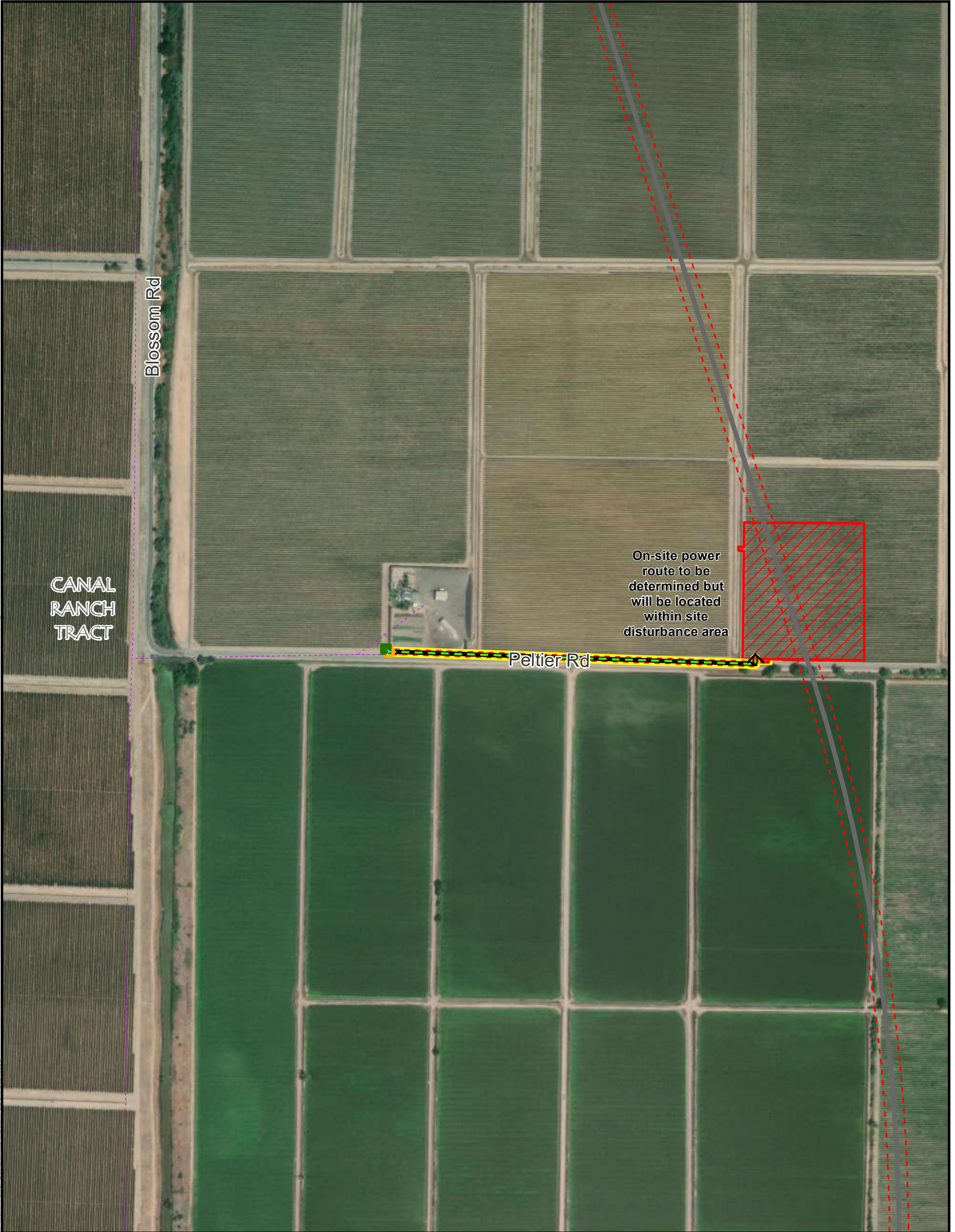


For Illustration Purposes Only



Sheet 14 of 26
Delta Conveyance Project Power Supply
September 2024

Data Source: DCA, DWR



CANAL RANCH TRACT

Blossom Rd

Peltier Rd

On-site power route to be determined but will be located within site disturbance area

- Connection to Existing Overhead
- Proposed Metering Area
- Metering Area
- Proposed Underground Power**
- Within Existing Roadway
- Existing Power**
- PG&E Low Voltage**
- 11 kV
- Tunnel
- Permanent Subsurface Impact
- Permanent Surface Impact
- Temporary Surface Impact

Draft example mapbook for discussion purposes only. This mapbook is a scaled representation of the GIS data and only shows major facilities.



For Illustration Purposes Only



Sheet 15 of 26
Delta Conveyance Project Power Supply
September 2024












Data Source: DCA, DWR



On-site power route to be determined but will be located within site disturbance area

Relocating overhead power to below ground due to overhead restrictions

TERMINOUS TRACT

-  Connection to Existing Overhead
-  Proposed Metering Area
-  Metering Area
-  Tunnel
-  Permanent Subsurface Impact
-  Permanent Surface Impact
-  Temporary Surface Impact
-  Proposed Underground Power
-  Within Proposed Roadway
-  PG&E Low Voltage
-  11 kV










Draft example mapbook for discussion purposes only. This mapbook is a scaled representation of the GIS data and only shows major facilities.

Data Source: DCA, DWR



On-site power route to be determined but will be located within site disturbance area

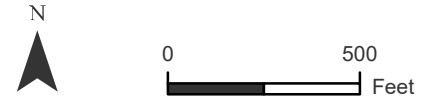
KING ISLAND Eight Mile Rd

-  Connection to Existing Overhead
-  Proposed Metering Area
-  Metering Area
-  Proposed Underground Power
-  Tunnel
-  Permanent Subsurface Impact
-  Permanent Surface Impact
-  Temporary Surface Impact
-  Within Proposed Roadway

Draft example mapbook for discussion purposes only. This mapbook is a scaled representation of the GIS data and only shows major facilities.

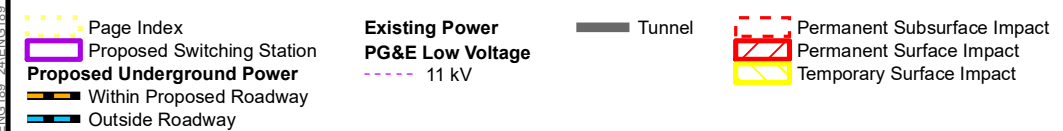
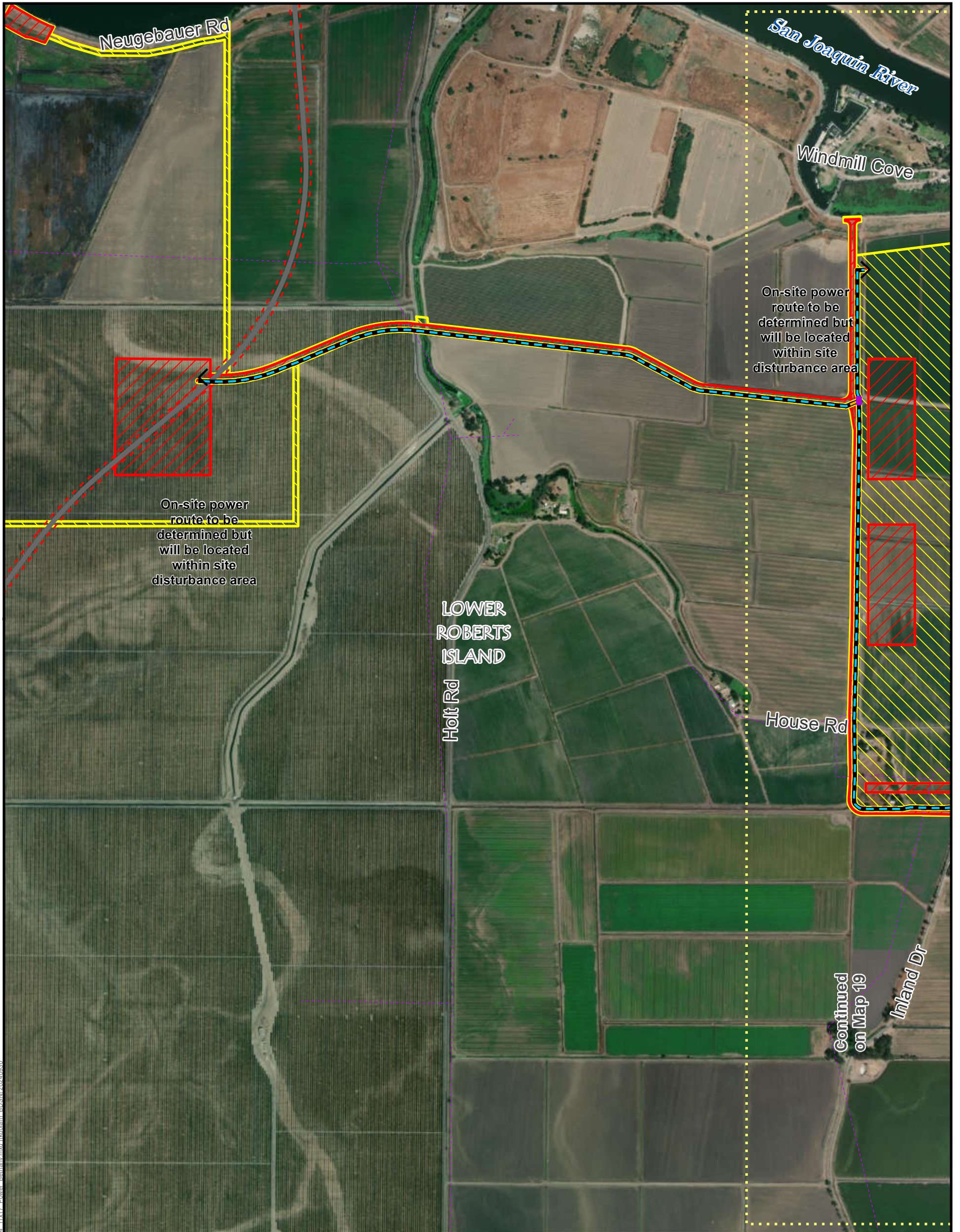


For Illustration Purposes Only

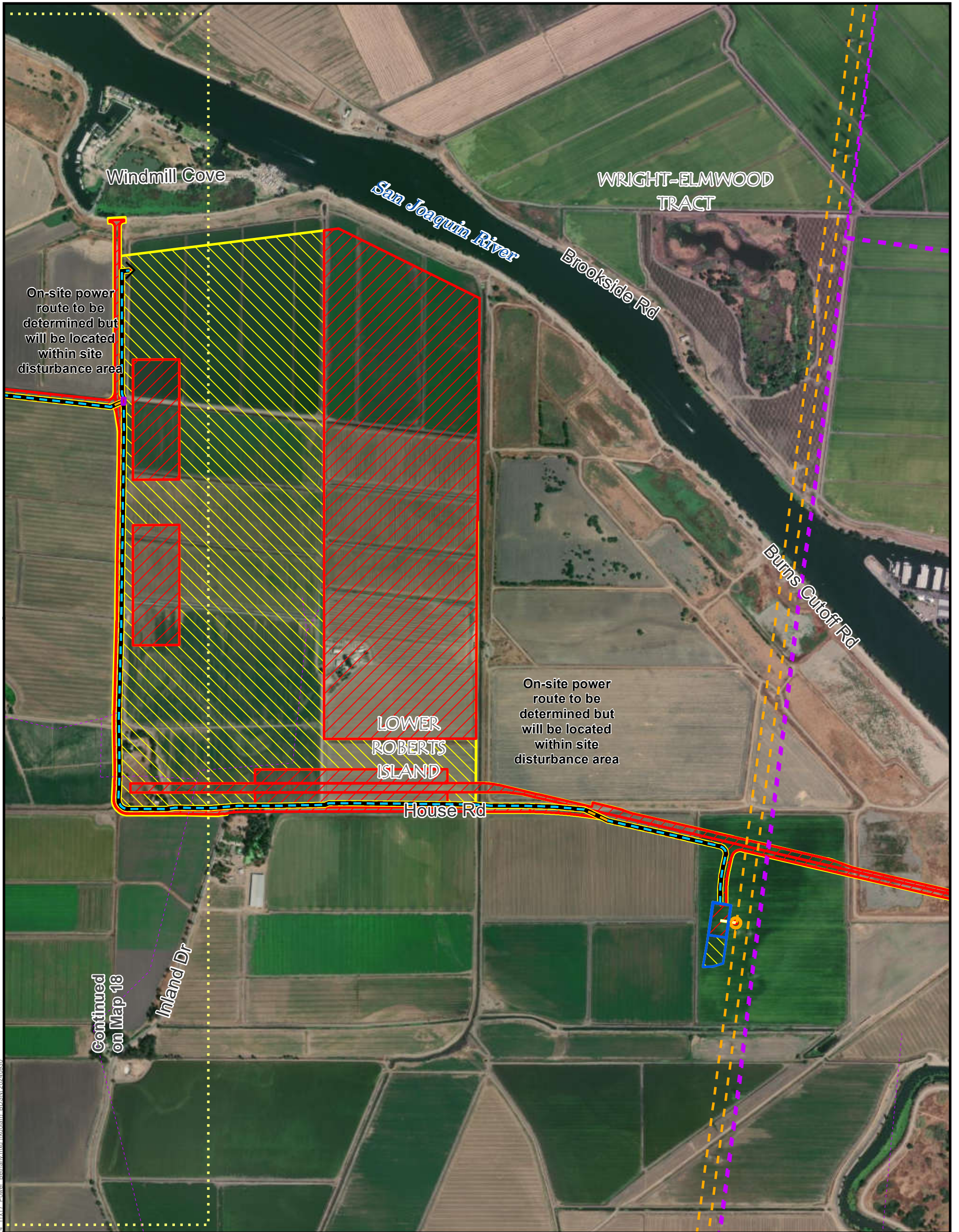


Sheet 17 of 26
Delta Conveyance Project Power Supply
September 2024

Data Source: DCA, DWR



Draft example mapbook for discussion purposes only. This mapbook is a scaled representation of the GIS data and only shows major facilities.



- Page Index
- Connection to Existing Overhead
- Proposed Substation
- Proposed Switching Station
- Proposed Underground Power**
 - Within Proposed Roadway
 - Outside Roadway
- Proposed Overhead Power**
 - New Line and Poles
- PG&E Low Voltage**
 - 11 kV
- PG&E High Voltage**
 - 230 kV
- WAPA**
 - 230 kV
- Permanent Subsurface Impact
- Permanent Surface Impact
- Temporary Surface Impact

Draft example mapbook for discussion purposes only.
This mapbook is a scaled representation of the GIS data and only shows major facilities.













UPPER
JONES
TRACT

Bacon Island Rd

On-site power
route to be
determined but
will be located
within site
disturbance area

-  Connection to Existing Overhead
-  Metering Area
-  Tunnel
-  Permanent Subsurface Impact
-  Permanent Surface Impact
-  Temporary Surface Impact
- Proposed Underground Power**
-  Underground New, New Line and Poles
- PG&E Low Voltage**
-  11 kV

**Draft example mapbook for discussion purposes only.
This mapbook is a scaled representation of the
GIS data and only shows major facilities.**

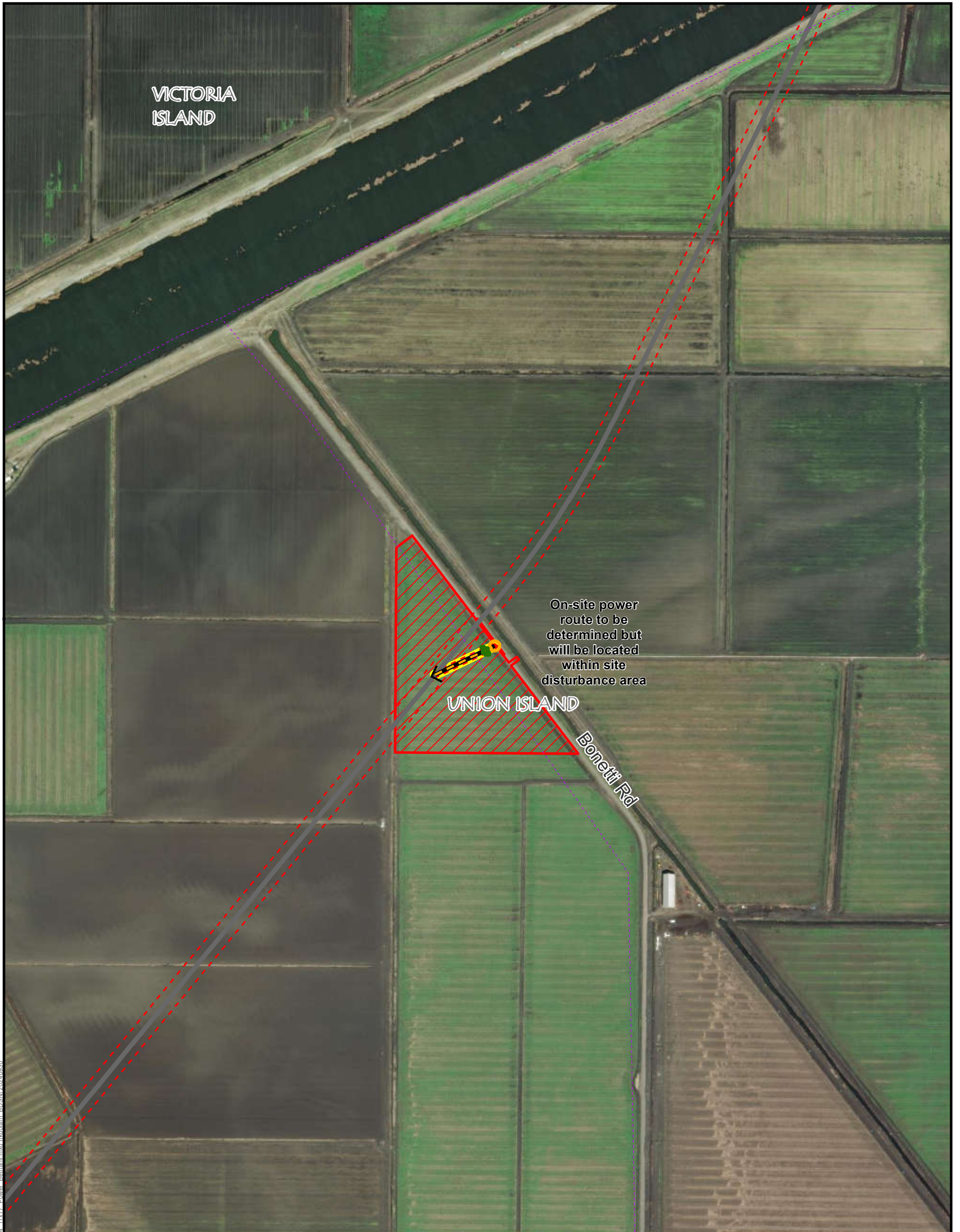


For Illustration Purposes Only



Sheet 20 of 26
Delta Conveyance Project Power Supply
September 2024

Data Source: DCA, DWR













On-site power route to be determined but will be located within site disturbance area

UNION ISLAND

Bonetti Rd

VICTORIA ISLAND

-  Connection to Existing Overhead
-  Metering Area
-  Proposed Underground Power
-  Within Proposed Roadway
-  PG&E Low Voltage
-  11 kV
-  Tunnel
-  Permanent Subsurface Impact
-  Permanent Surface Impact
-  Temporary Surface Impact

Draft example mapbook for discussion purposes only. This mapbook is a scaled representation of the GIS data and only shows major facilities.



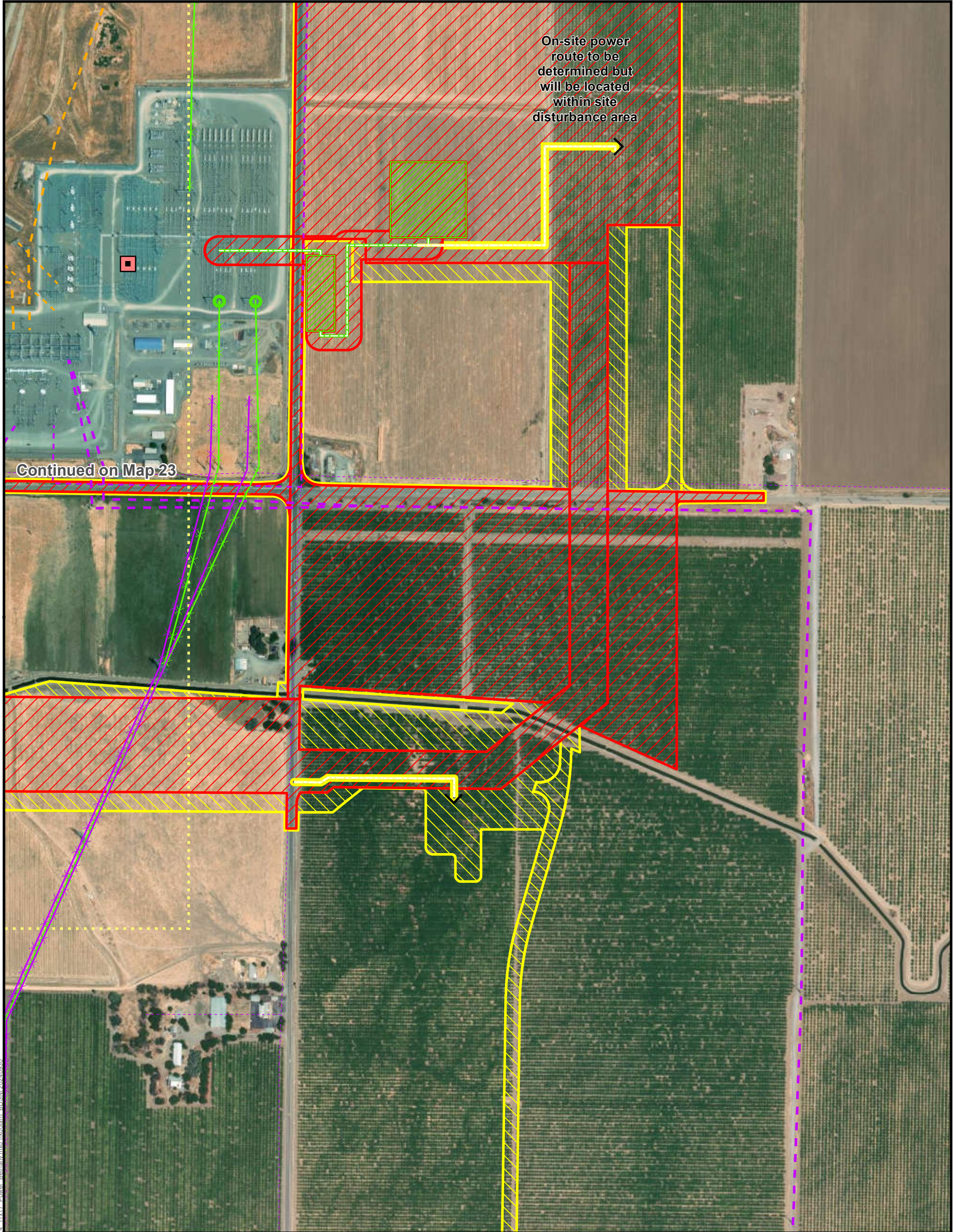
For Illustration Purposes Only



Sheet 21 of 26
Delta Conveyance Project Power Supply
September 2024

I:\Projects\GIS\38_000\GIS\Request\11\11\Deliverable\11\11\Deliverable - 11\11\117 Power_Bethany.mxd ([Kofolam] - BDSN) 2024/09/30

Data Source: DCA, DWR



Continued on Map 23

On-site power route to be determined but will be located within site disturbance area

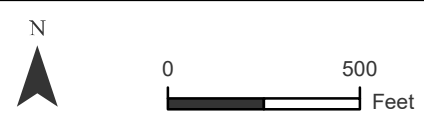
- ⋯ Page Index
 - Existing Substation
 - Connection to Existing Substation
 - ▨ Substation
 - Proposed Overhead Power**
 - New Line and Poles
 - New Line and Towers
-
- Existing Power**
 - PG&E Low Voltage**
 - - - 11 kV
 - PG&E High Voltage**
 - - - 60-70 kV
 - ✖ 500 kV
 - PGE High Voltage**
 - - - 230 kV
 - WAPA**
 - - - 60-70 kV
 - - - 230 kV
 - Other**
 - ✖ TANC 500 kV

- - - Permanent Subsurface Impact
- ▨ Permanent Surface Impact
- ▨ Temporary Surface Impact

Draft example mapbook for discussion purposes only. This mapbook is a scaled representation of the GIS data and only shows major facilities.



For Illustration Purposes Only



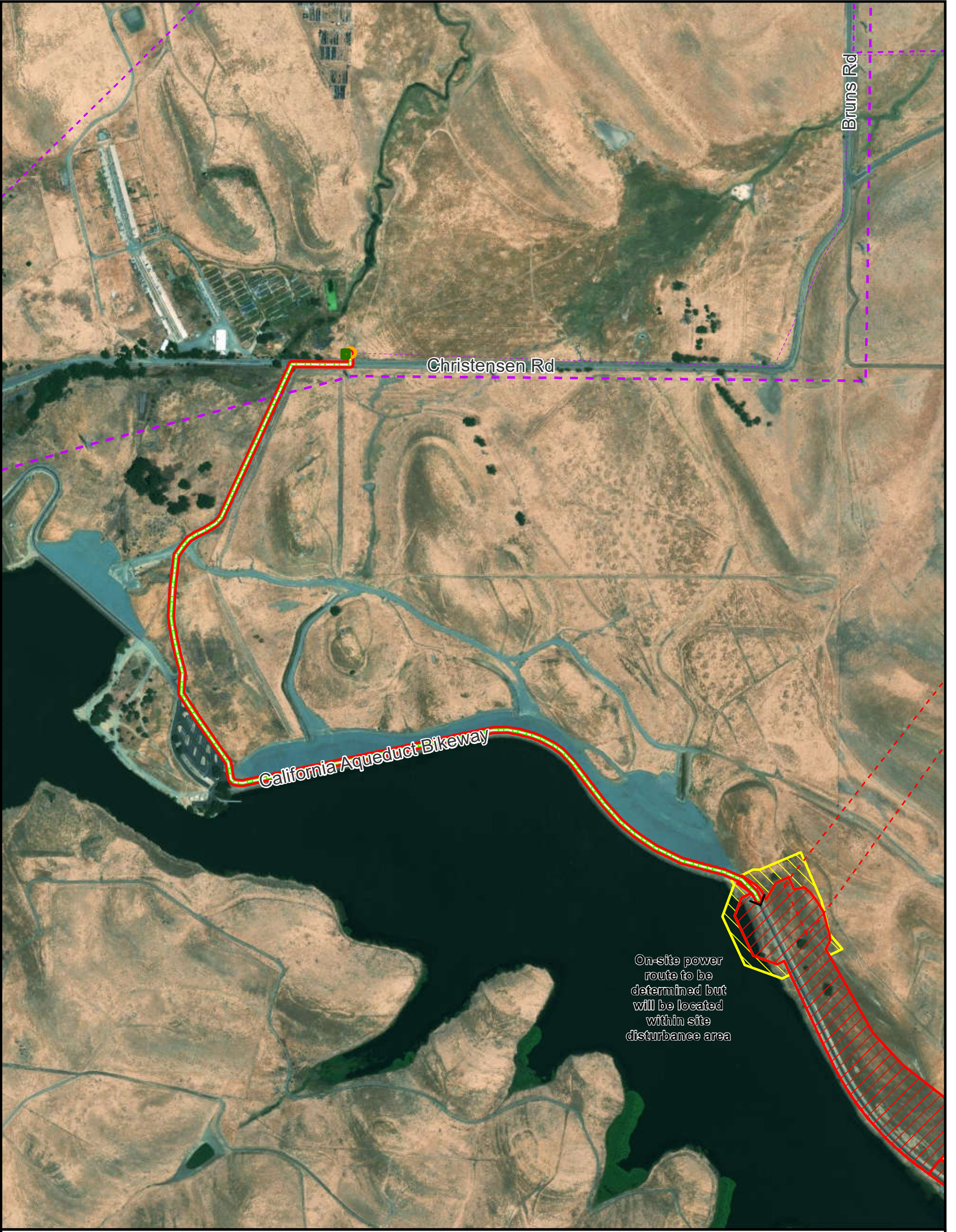
Sheet 22 of 26
Delta Conveyance Project Power Supply
September 2024

Data Source: DCA, DWR



- Page Index
- Existing Substation
- Connection to Existing Overhead
- Metering Area
- Proposed Overhead Power**
- New Line and Poles
- PG&E Low Voltage**
- 11 kV
- PG&E High Voltage**
- 60-70 kV
- 500 kV
- PGE High Voltage**
- 230 kV
- WAPA**
- 60-70 kV
- 230 kV
- Other
- TANC 500 kV
- Permanent Subsurface Impact
- Permanent Surface Impact
- Temporary Surface Impact

Draft example mapbook for discussion purposes only. This mapbook is a scaled representation of the GIS data and only shows major facilities.

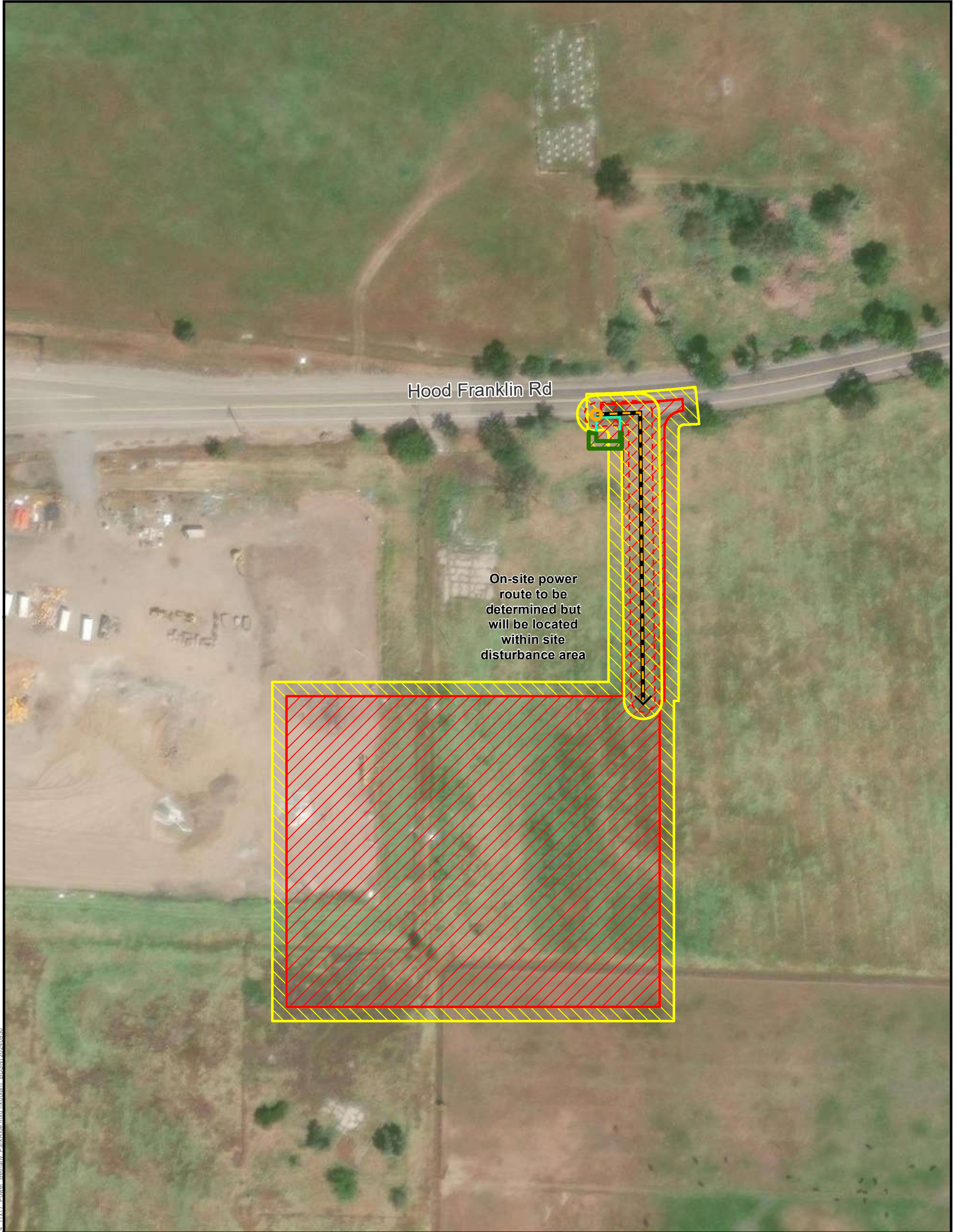


- Connection to Existing Overhead
- Metering Area
- Proposed Overhead Power**
- New Line and Towers
- PG&E Low Voltage**
- 11 kV
- PG&E High Voltage**
- 60-70 kV
- PGE High Voltage**
- 230 kV
- Permanent Subsurface Impact
- Permanent Surface Impact
- Temporary Surface Impact









On-site power route to be determined but will be located within site disturbance area

Draft example mapbook for discussion purposes only. This mapbook is a scaled representation of the GIS data and only shows major facilities.

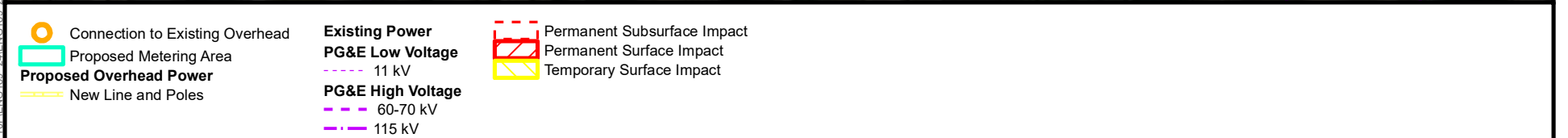
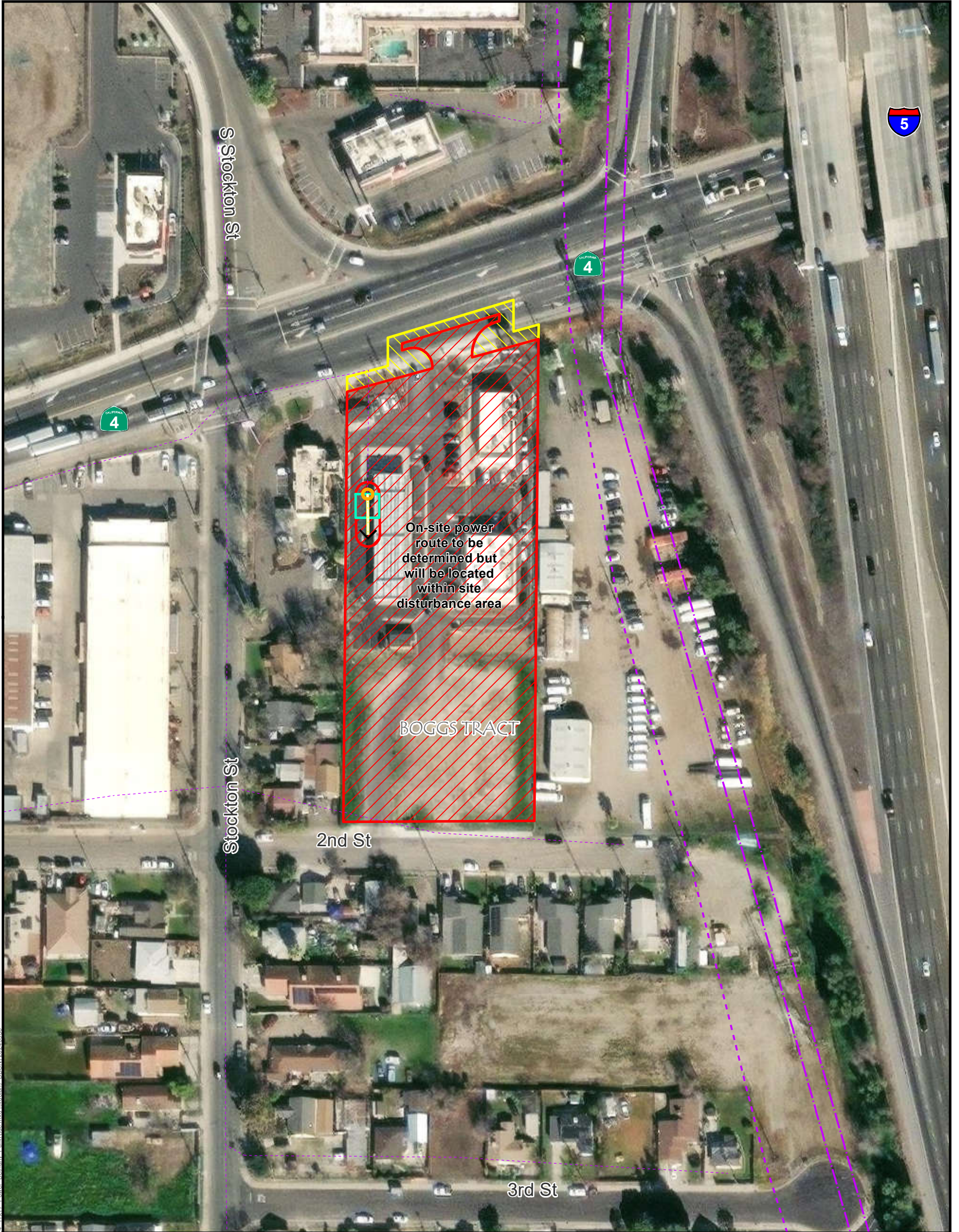
Data Source: DCA, DWR



On-site power route to be determined but will be located within site disturbance area

-  Connection to Existing Overhead
-  Proposed Metering Area
-  Metering Area
-  **Proposed Underground Power**
-  Within Proposed Roadway
-  Permanent Subsurface Impact
-  Permanent Surface Impact
-  Temporary Surface Impact

Draft example mapbook for discussion purposes only. This mapbook is a scaled representation of the GIS data and only shows major facilities.



Draft example mapbook for discussion purposes only. This mapbook is a scaled representation of the GIS data and only shows major facilities.

