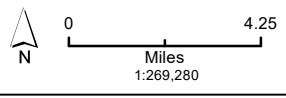


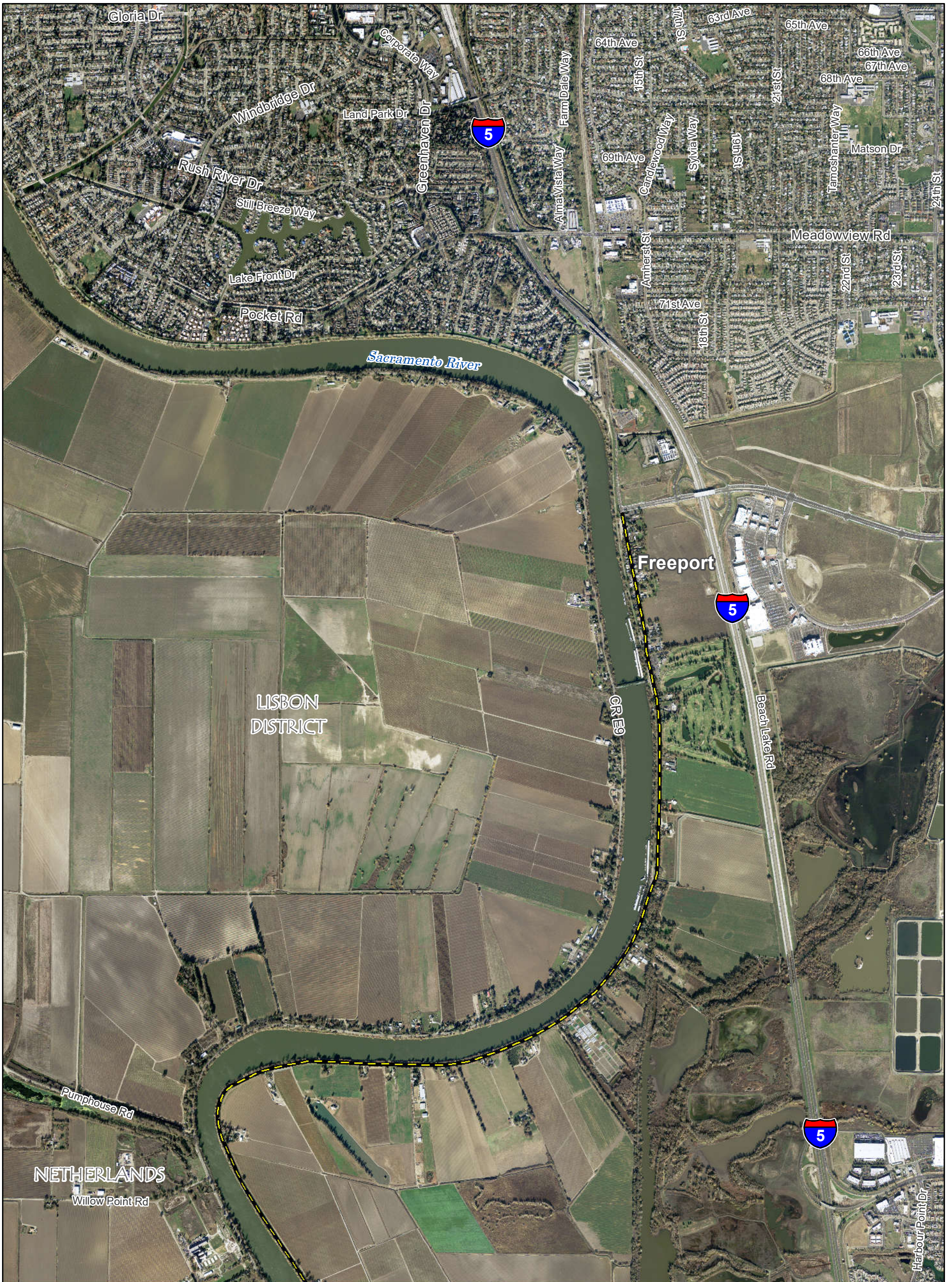
T:\WG1-38\GIS_33_00\GISRequest_11F\Deliverable_10F\ENG189_24\DC02h2B2_MapbookIndex.mxd 2024/09/20 1:56:17 PM

- | | | | | |
|-----------------------------|-------------------------|------------------------|-----------------------------------|-----------------------------|
| Map Extent | Batch Plant | Intake Structure | Shaft | Permanent Subsurface Impact |
| Road Improvement | Concrete Batch Plant | Outlet Structure | Shaft Pad | Permanent Surface Impact |
| Aqueduct | Control Structure | Peat Storage | Slurry/Grout Mixing Plant | Temporary Surface Impact |
| Construction Water Pipeline | Discharge Structure | Pumping Plant | Substation | RTM and Ring Levee |
| RTM Conveyor | Electrical Building | Rail Depot | Surge Basin | Ring Levee |
| Rail Spur | Fuel Station | Sediment Drying Lagoon | Surge Tank | RTM Area |
| Runoff Discharge Pipe | Fuel Storage | Sedimentation Basin | Topsoil Storage | Levee Improvement Area |
| Tunnel | Intake Facility Grounds | Septic System | Water Treatment and Storage Tanks | |



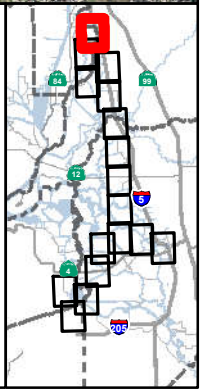
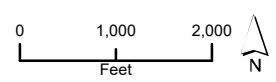
Sources: DCA, DWR

Draft example mapbook for discussion purposes only.
This mapbook is a scaled representation of the GIS data
and only shows major facilities.
September 2024



T:\WGI\38\GIS_33_00\GISRequest_11\F\Deliverable_10\ENG189_24\DC021B2b_Mapbook.mxd 20240920 2:00:30 PM

Project Features
 Road Improvement



Source: DCA, DWR, ESRI Basemap Aerial Imagery

Draft example mapbook for discussion purposes only. This mapbook is a scaled representation of the GIS data and only shows major facilities. (September 2024)

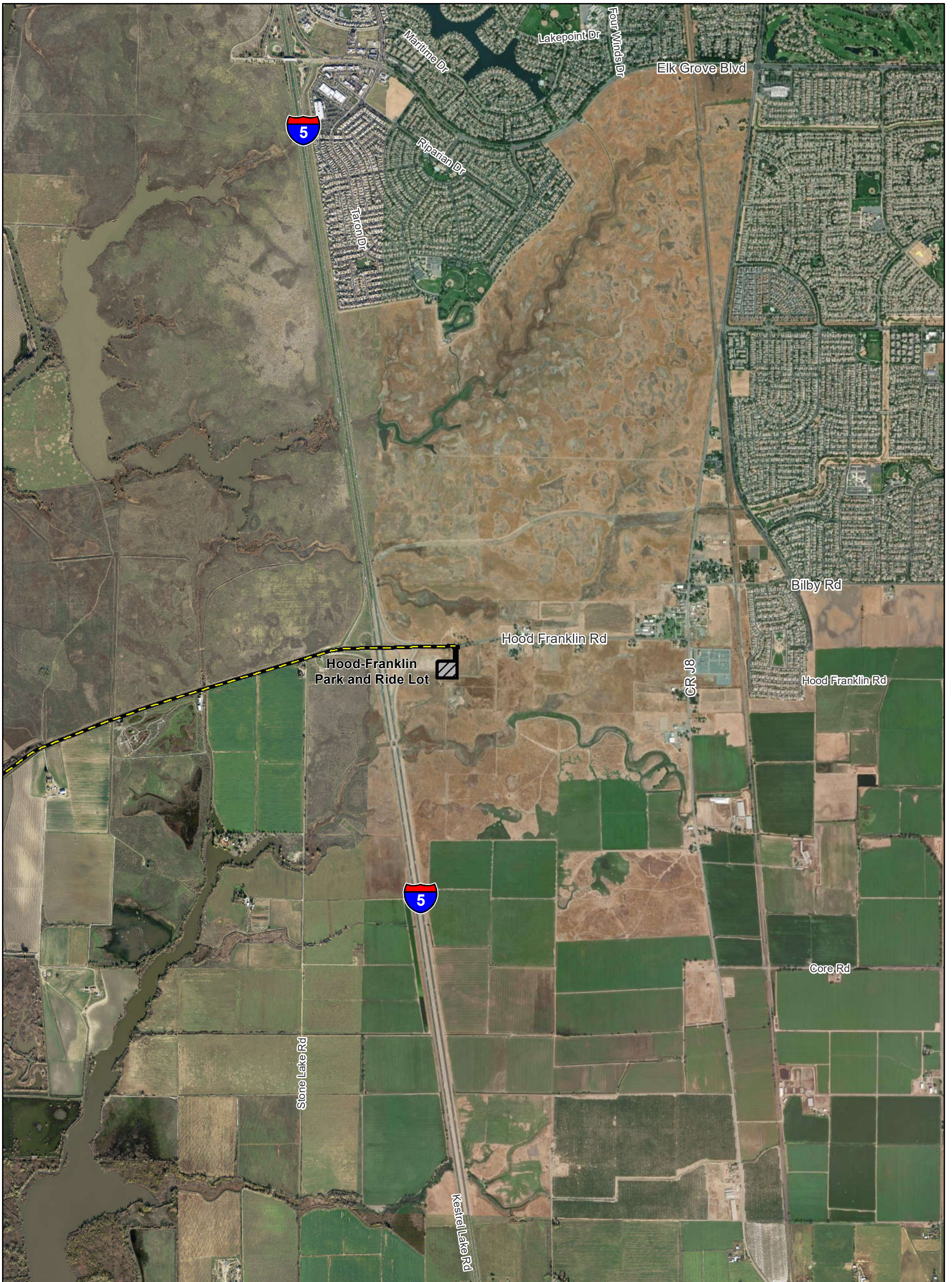


T:\WG\38\GIS_33_00\GISRequest_11\F\Deliverable_10\ENG189_24\DC02hB2b_Mapbook.mxd 20240920 2:00:50 PM

Project Features		
Road Improvement	Fuel Station	Septic System
Tunnel	Intake Facility Grounds	Shaft
Intake Structure	Slurry/Grout Mixing Plant	Permanent Subsurface Impact
Sediment Drying Lagoon	Water Treatment and Storage Tanks	Permanent Surface Impact
Sedimentation Basin		Temporary Surface Impact

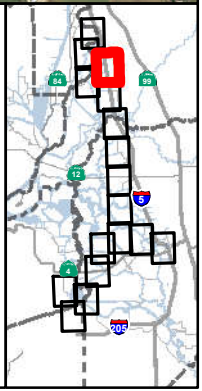
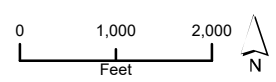
Source: DCA, DWR, ESRI Basemap Aerial Imagery

**Draft example mapbook for discussion purposes only.
This mapbook is a scaled representation of the GIS data
and only shows major facilities.
(September 2024)**



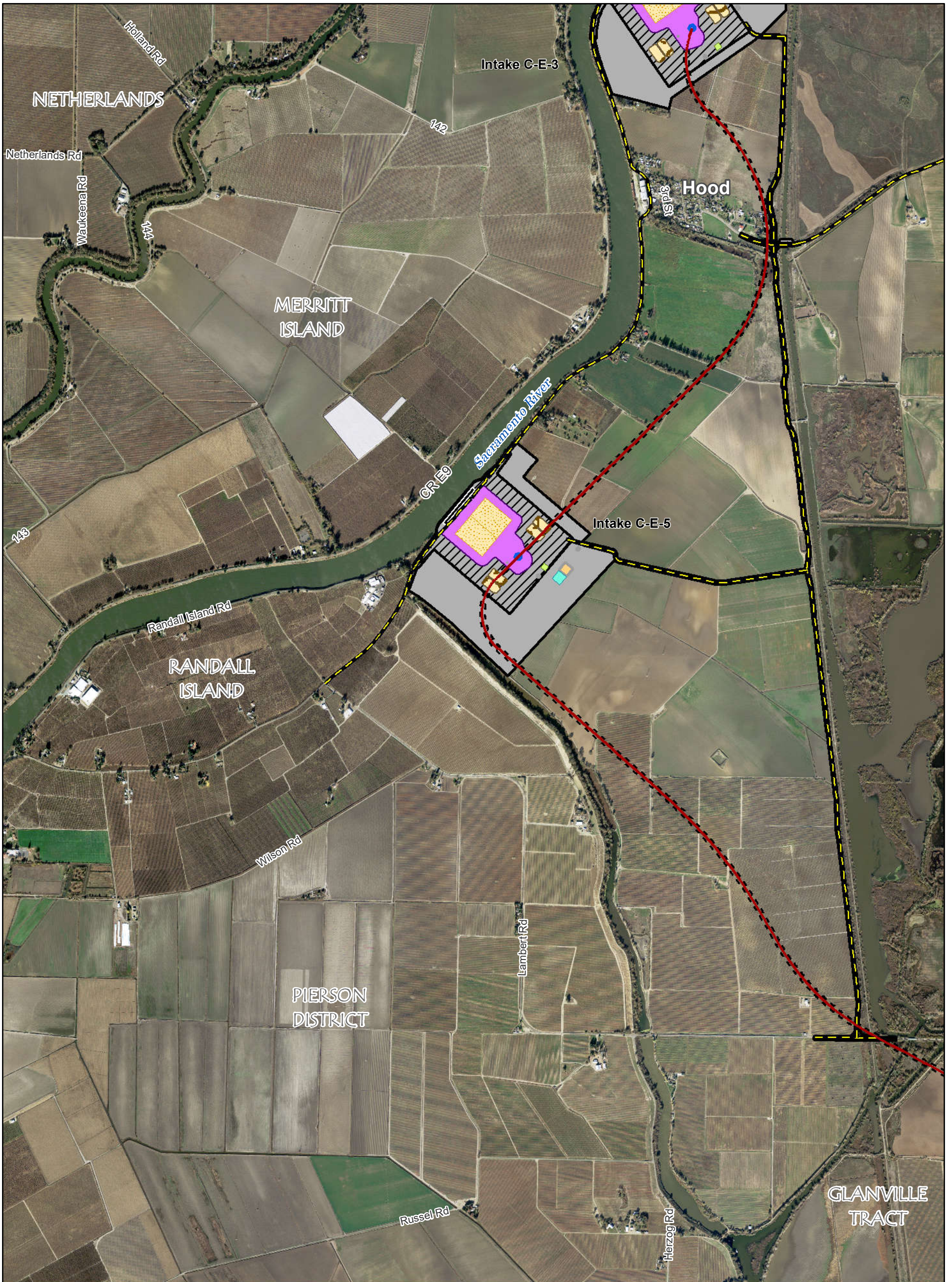
T:\WG\38\GIS_33_00\GISRequest_11\F\Deliverable_10\ENG189_24\DC02hB2b_Mapbook.mxd 20240920 2:01:05 PM

- Project Features**
- Road Improvement
 - Permanent Surface Impact
 - Temporary Surface Impact



Source: DCA, DWR, ESRI Basemap Aerial Imagery

**Draft example mapbook for discussion purposes only.
 This mapbook is a scaled representation of the GIS data
 and only shows major facilities.
 (September 2024)**

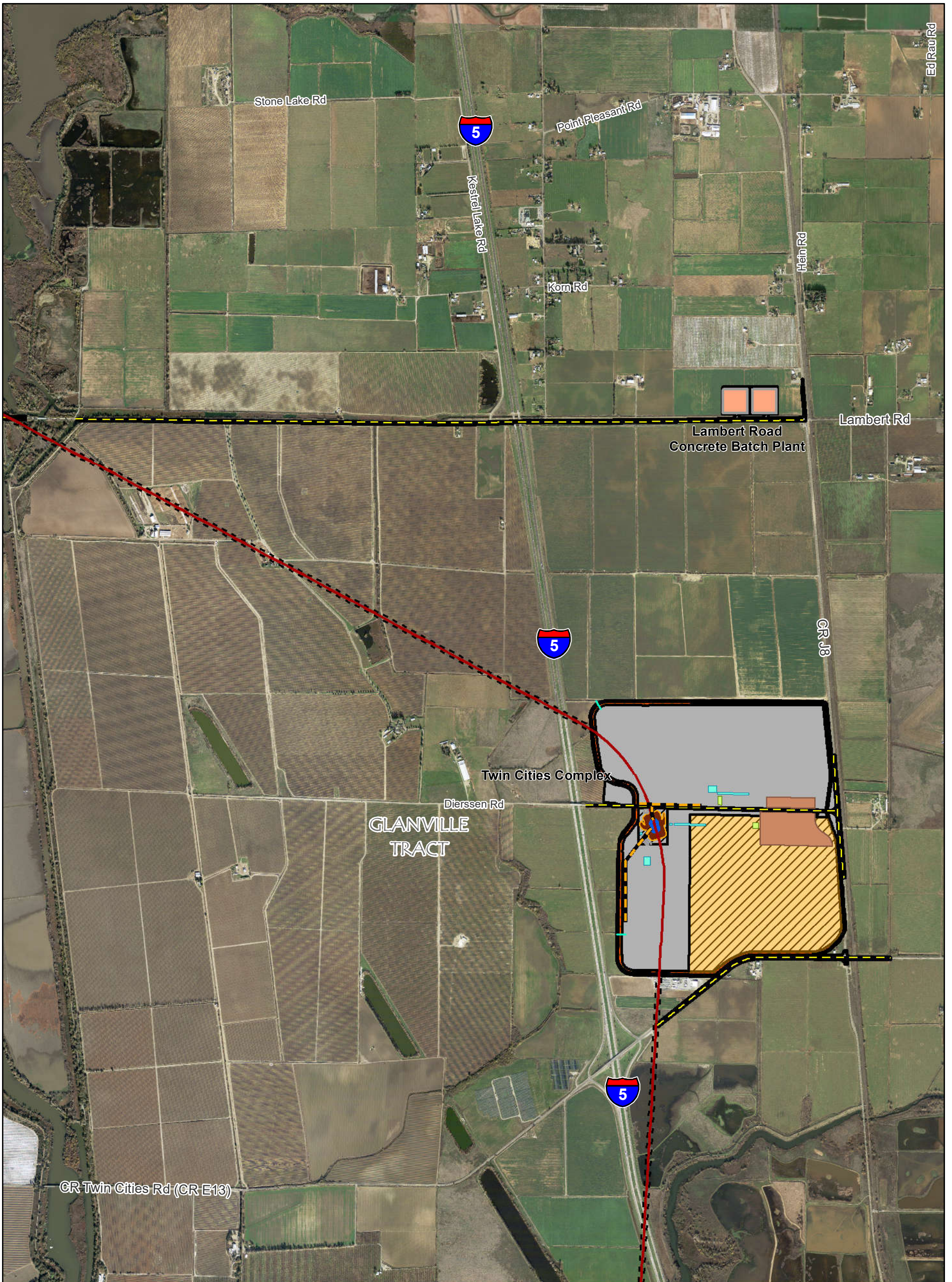


T:\WG\38\GIS_33_00\GISRequest_11\F\Deliverable_10\ENG189_24_DC02\B2b_Mapbook.mxd 20240920 2:01:25 PM

Project Features		
Road Improvement	Fuel Station	Septic System
Tunnel	Intake Facility Grounds	Shaft
	Intake Structure	Slurry/Grout Mixing Plant
	Sediment Drying Lagoon	Water Treatment and Storage Tanks
	Sedimentation Basin	
		Permanent Subsurface Impact
		Permanent Surface Impact
		Temporary Surface Impact

Source: DCA, DWR, ESRI Basemap Aerial Imagery

**Draft example mapbook for discussion purposes only.
This mapbook is a scaled representation of the GIS data
and only shows major facilities.
(September 2024)**

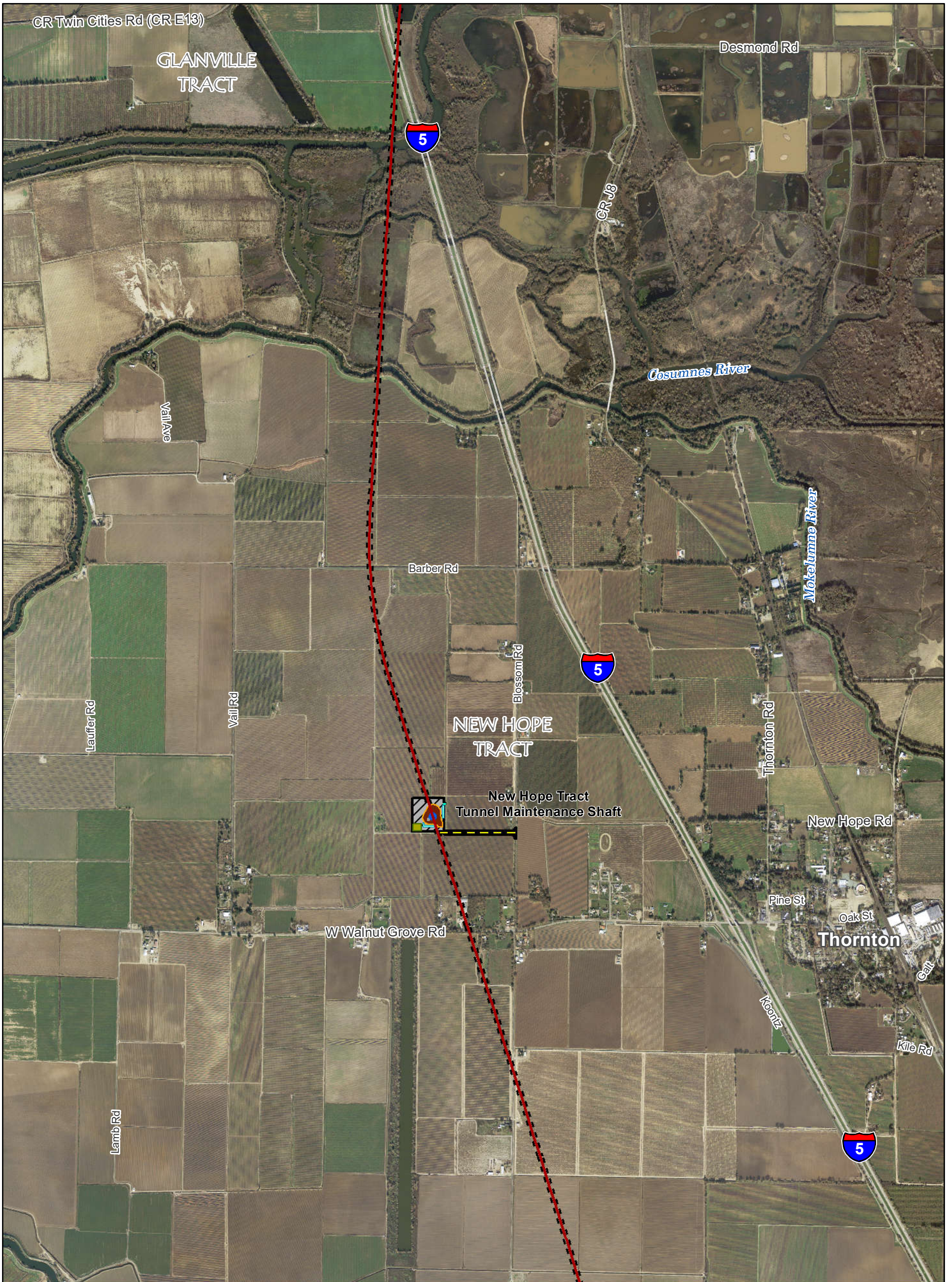


T:\WGI\38\GIS_33_00\GISRequest_11\F\Deliverable_10\ENG189_24\ENG189_24_DC02hB2b_Mapbook.mxd 20240920 2:01:43 PM

Project Features			
Road Improvement	Concrete Batch Plant	Shaft Pad	Permanent Subsurface Impact
RTM Conveyor	Fuel Storage	Slurry/Grout Mixing Plant	Permanent Surface Impact
Runoff Discharge Pipe	Septic System	Topsoil Storage	Temporary Surface Impact
Tunnel	Shaft	Water Treatment and Storage Tanks	RTM and Ring Levee
			Ring Levee
			RTM Area

Source: DCA, DWR, ESRI Basemap Aerial Imagery

**Draft example mapbook for discussion purposes only.
This mapbook is a scaled representation of the GIS data
and only shows major facilities.
(September 2024)**



T:\WG\38\GIS_33_00\GISRequest_11\F\Deliverable_10\ENG189_24\ENG189_24_DC02hB2b_Mapbook.mxd 20240920 2:02:03 PM

Project Features			
Road Improvement	Fuel Station	Shaft Pad	Permanent Subsurface Impact
Runoff Discharge Pipe	Peat Storage	Water Treatment and Storage Tanks	Permanent Surface Impact
Tunnel	Shaft		Temporary Surface Impact

Source: DCA, DWR, ESRI Basemap Aerial Imagery

**Draft example mapbook for discussion purposes only.
This mapbook is a scaled representation of the GIS data
and only shows major facilities.
(September 2024)**



T:\WG\38\GIS_33_00\GISRequest_11\F\Deliverable_10\ENGIN189_24_DC02hB2b_Mapbook.mxd 20240920 2:02:24 PM

Project Features			
Road Improvement	Fuel Station	Shaft Pad	Permanent Subsurface Impact
Runoff Discharge Pipe	Peat Storage	Water Treatment and Storage Tanks	Permanent Surface Impact
Tunnel	Shaft		Temporary Surface Impact

Source: DCA, DWR, ESRI Basemap Aerial Imagery

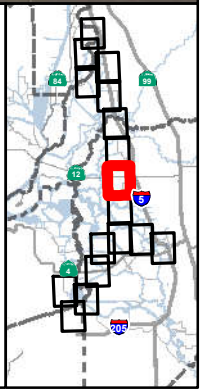
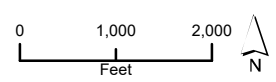
**Draft example mapbook for discussion purposes only.
 This mapbook is a scaled representation of the GIS data
 and only shows major facilities.
 (September 2024)**



T:\W\GIS\GIS_33_00\GISRequest_11\F\Deliverable_10\ENGINE189_24\ENGINE189_24_DC02hB2b_Mapbook.mxd 20240920 2:02:44 PM

Project Features

- | | | | |
|-----------------------|--------------|-----------------------------------|-----------------------------|
| Road Improvement | Fuel Station | Shaft Pad | Permanent Subsurface Impact |
| Runoff Discharge Pipe | Peat Storage | Water Treatment and Storage Tanks | Permanent Surface Impact |
| Tunnel | Shaft | | Temporary Surface Impact |



Source: DCA, DWR, ESRI Basemap Aerial Imagery

**Draft example mapbook for discussion purposes only.
This mapbook is a scaled representation of the GIS data
and only shows major facilities.
(September 2024)**

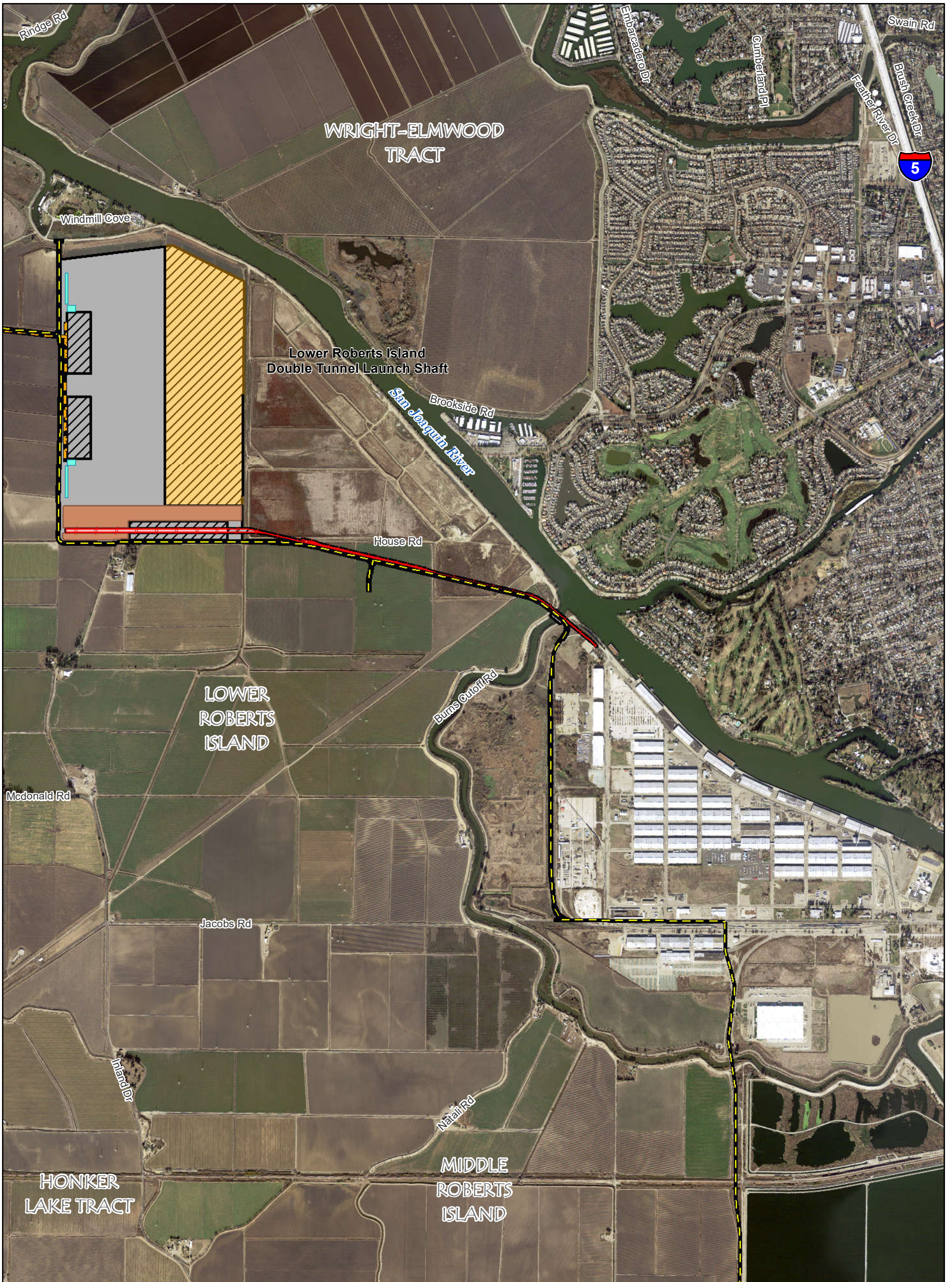


T:\W\GIS\GIS_33_00\GISRequest_11\F\Deliverable_10\ENG189_24\DC02hB2b_Mapbook.mxd 20240920 2:03:06 PM

Project Features			
Road Improvement	Fuel Station	Shaft Pad	Permanent Subsurface Impact
Runoff Discharge Pipe	Peat Storage	Water Treatment and Storage Tanks	Permanent Surface Impact
Tunnel	Shaft		Temporary Surface Impact

Source: DCA, DWR, ESRI Basemap Aerial Imagery

**Draft example mapbook for discussion purposes only.
This mapbook is a scaled representation of the GIS data
and only shows major facilities.
(September 2024)**

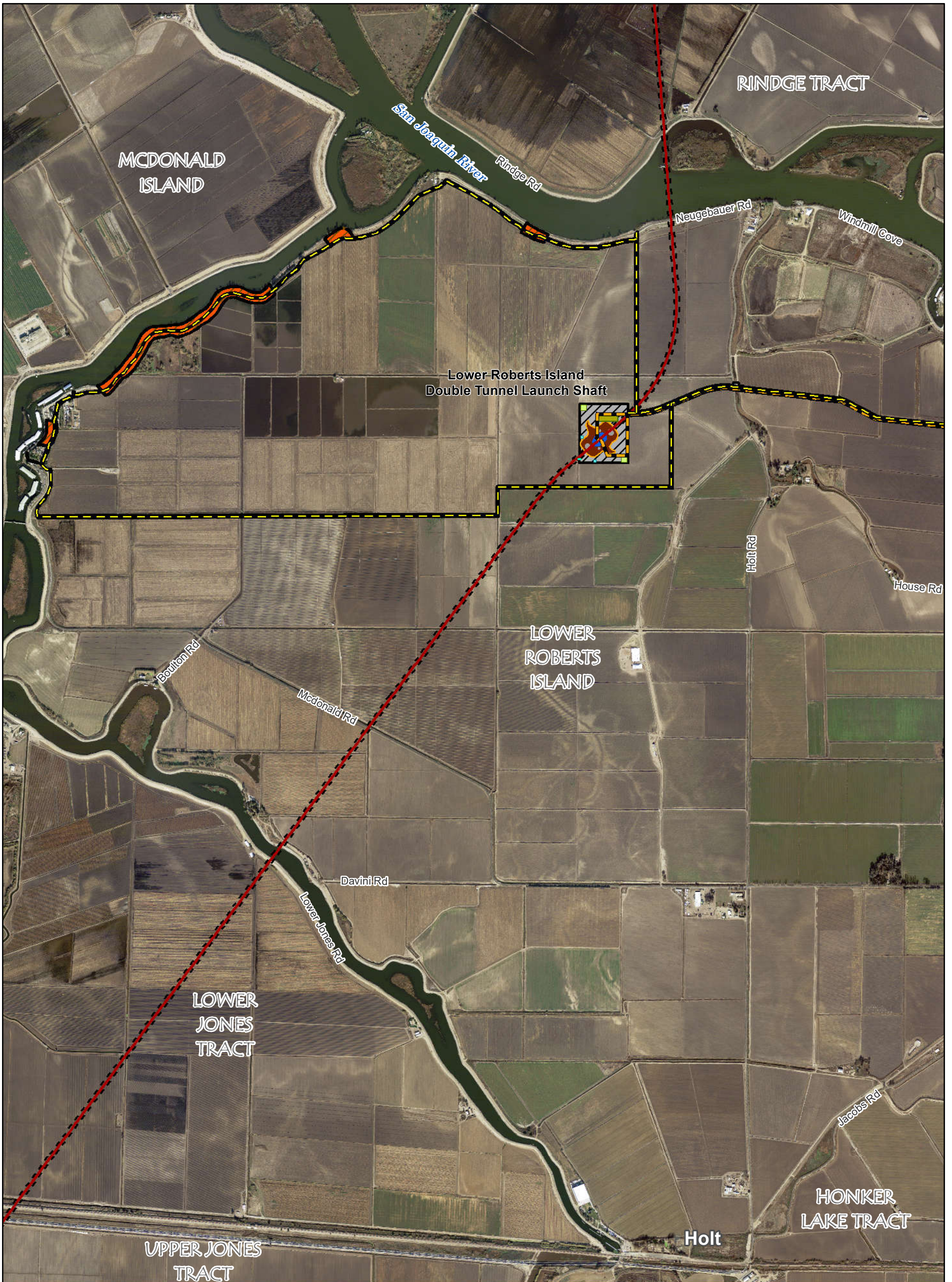


T:\WGI\38\GIS_33_00\GISRequest_11\F\Deliverable_10\ENG189_24\DC02hB2b_Mapbook.mxd 20240920 2:03:24 PM

Project Features			
Road Improvement	Rail Depot	Water Treatment and Storage Tanks	Permanent Surface Impact
RTM Conveyor	Topsoil Storage		Temporary Surface Impact
Rail Spur			RTM Area

Source: DCA, DWR, ESRI Basemap Aerial Imagery

**Draft example mapbook for discussion purposes only.
This mapbook is a scaled representation of the GIS data
and only shows major facilities.
(September 2024)**



T:\WG\38\GIS_33_00\GISRequest_11\F\Deliverable_10\ENG189_24\DC02hB2b_Mapbook.mxd 20240920 2:03:43 PM

Project Features			
Road Improvement	Batch Plant	Shaft	Permanent Subsurface Impact
RTM Conveyor	Fuel Storage	Shaft Pad	Permanent Surface Impact
Runoff Discharge Pipe	Peat Storage	Slurry/Grout Mixing Plant	Temporary Surface Impact
Tunnel	Septic System	Water Treatment and Storage Tanks	Levee Improvement Area

Source: DCA, DWR, ESRI Basemap Aerial Imagery

**Draft example mapbook for discussion purposes only.
This mapbook is a scaled representation of the GIS data
and only shows major facilities.
(September 2024)**



T:\WG\38\GIS_33_00\GISRequest_11\Deliverable_10\ENG189_24\DC02hB2b_Mapbook.mxd 20240920 2:04:02 PM



Project Features			
Road Improvement	Fuel Storage	Shaft Pad	
Runoff Discharge Pipe	Peat Storage	Water Treatment and Storage Tanks	
Tunnel	Shaft		

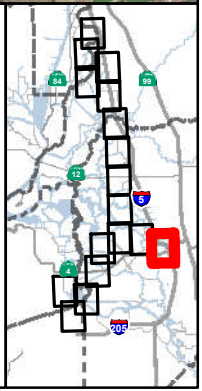
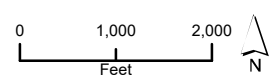
Source: DCA, DWR, ESRI Basemap Aerial Imagery

**Draft example mapbook for discussion purposes only.
This mapbook is a scaled representation of the GIS data
and only shows major facilities.
(September 2024)**



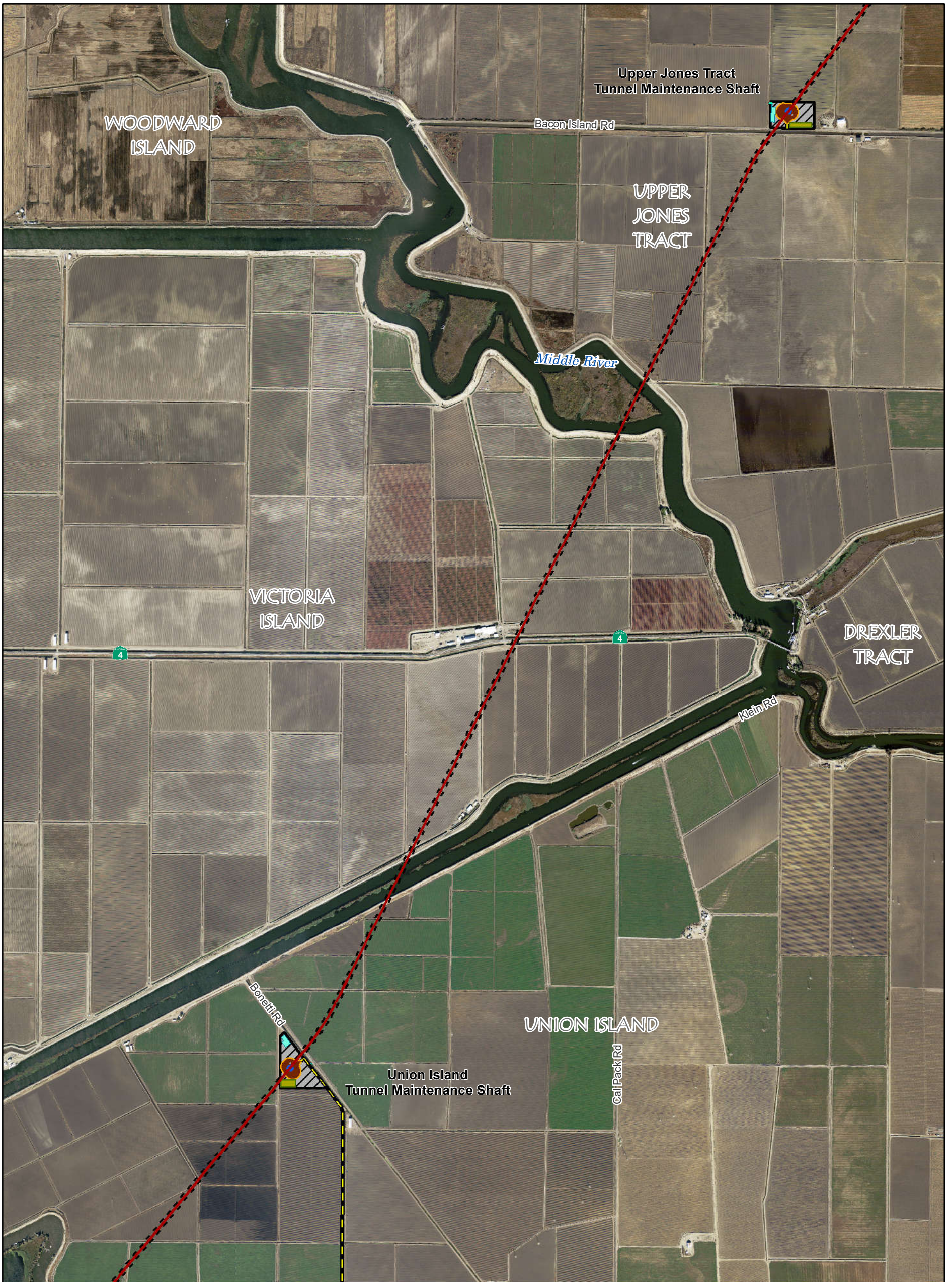
T:\W\GIS\GIS_33_00\GISRequest_11\F\Deliverable_10\ENG189_24\ENG189_24_DC021B2b_Mapbook.mxd 20240920 2:04:20 PM

- Project Features**
-  Permanent Surface Impact
 -  Temporary Surface Impact



Source: DCA, DWR, ESRI Basemap Aerial Imagery

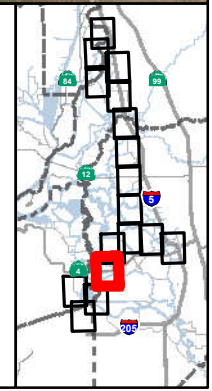
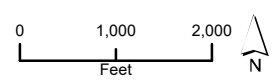
**Draft example mapbook for discussion purposes only.
This mapbook is a scaled representation of the GIS data
and only shows major facilities.
(September 2024)**



T:\WG\38\GIS_33_00\GISRequest_11\F\Deliverable_10\ENGIN189_24\ENGIN189_24_DC02hB2b_Mapbook.mxd 20240920 2:04:39 PM

Project Features

Road Improvement	Fuel Storage	Shaft Pad	Permanent Subsurface Impact
Runoff Discharge Pipe	Peat Storage	Water Treatment and Storage Tanks	Permanent Surface Impact
Tunnel	Shaft		



Source: DCA, DWR, ESRI Basemap Aerial Imagery

**Draft example mapbook for discussion purposes only.
This mapbook is a scaled representation of the GIS data
and only shows major facilities.
(September 2024)**



T:\WGI\38\GIS_33_00\GISRequest_11\F\Deliverable_10\ENG189_24_DC021B2b_Mapbook.mxd 20240920 2:04:58 PM

Project Features		
Road Improvement	Concrete Batch Plant	Shaft
Aqueduct	Electrical Building	Substation
Construction Water Pipeline	Fuel Storage	Surge Basin
Tunnel	Pumping Plant	Surge Tank
	Septic System	Water Treatment and Storage Tanks
		Permanent Subsurface Impact
		Permanent Surface Impact
		Temporary Surface Impact

Source: DCA, DWR, ESRI Basemap Aerial Imagery

**Draft example mapbook for discussion purposes only.
This mapbook is a scaled representation of the GIS data
and only shows major facilities.
(September 2024)**

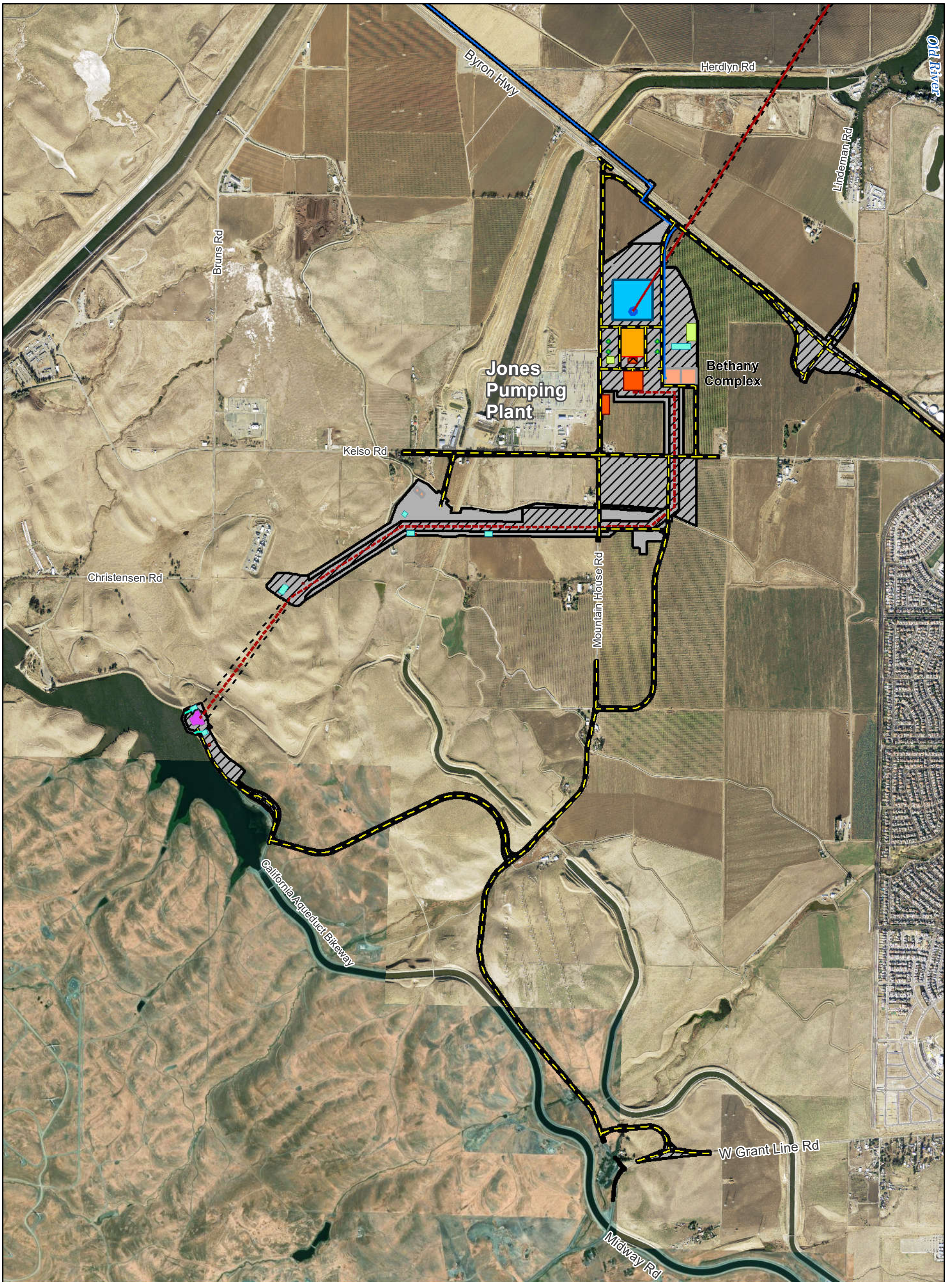


T:\WGI\38\GIS_33_00\GISRequest_11\Deliverable_10\ENG189_24\ENG189_24_DC02hB2b_Mapbook.mxd 20240920 2:05:15 PM

Project Features	
Road Improvement	Permanent Surface Impact
Construction Water Pipeline	Temporary Surface Impact

Source: DCA, DWR, ESRI Basemap Aerial Imagery

**Draft example mapbook for discussion purposes only.
This mapbook is a scaled representation of the GIS data
and only shows major facilities.
(September 2024)**



T:\WG\38\GIS_33_00\GISRequest_11\F\Deliverable_10\ENG189_24\ENG189_24_DC02hB2b_Mapbook.mxd 20240920 2:05:29 PM

Project Features				
Road Improvement	Concrete Batch Plant	Shaft	Permanent Subsurface Impact	
Aqueduct	Discharge Structure	Substation	Permanent Surface Impact	
Construction Water Pipeline	Electrical Building	Surge Basin	Temporary Surface Impact	
Runoff Discharge Pipe	Fuel Storage	Surge Tank		
Tunnel	Pumping Plant	Water Treatment and Storage Tanks		
	Septic System			

Source: DCA, DWR, ESRI Basemap Aerial Imagery

**Draft example mapbook for discussion purposes only.
This mapbook is a scaled representation of the GIS data
and only shows major facilities.
(September 2024)**