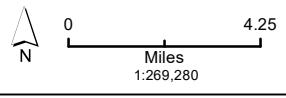


T:\WG\38\GIS\_33\_00\GISRequest\_11\F\Deliverable\_10\FENG158\_211\Mapbooks\ENG158\_DC02gB10b\_MapbookIndex.mxd 20211216 7:53:49 PM

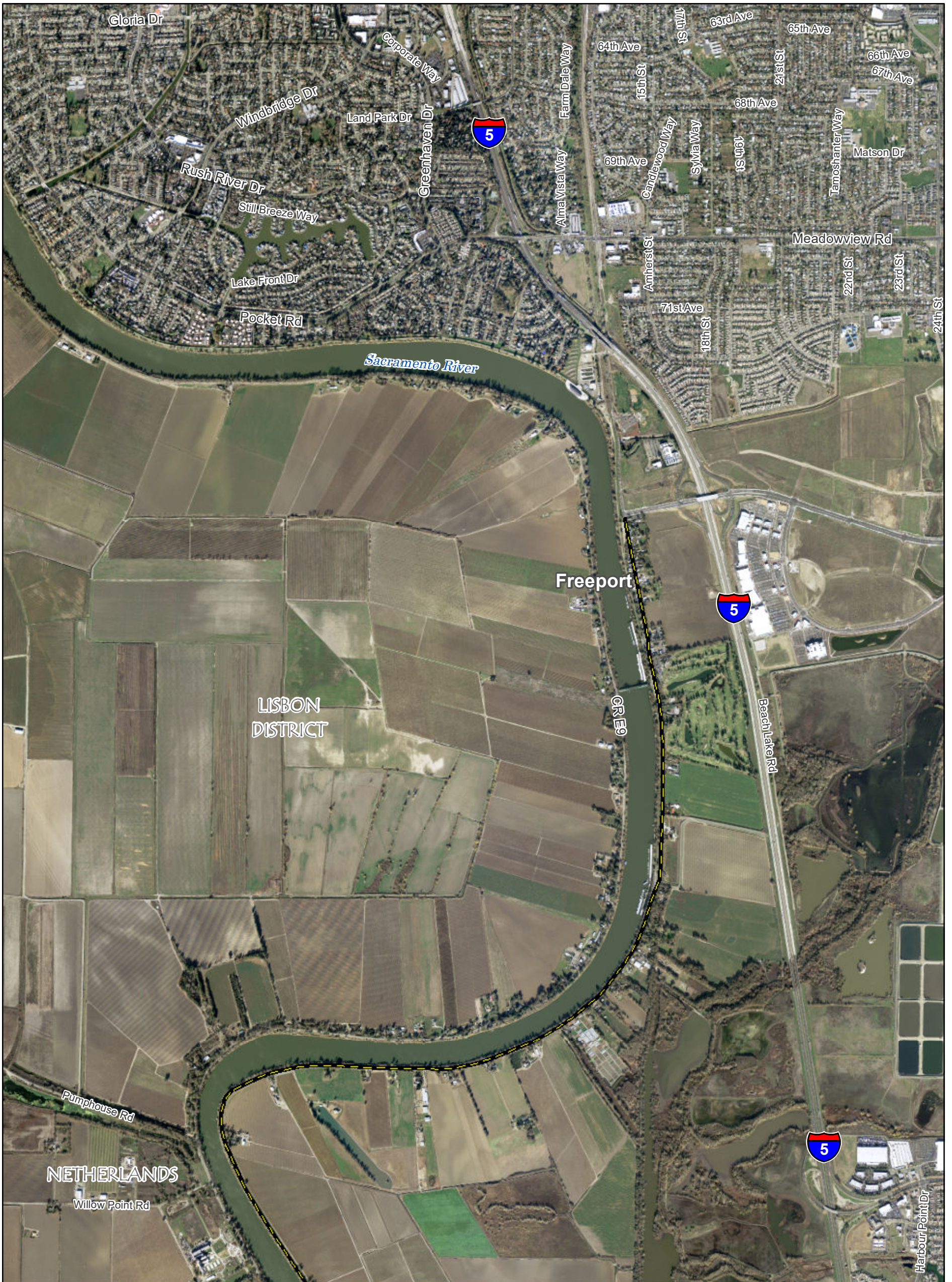
- |                             |                         |                        |                                   |                             |
|-----------------------------|-------------------------|------------------------|-----------------------------------|-----------------------------|
| Map Extent                  | Batch Plant             | Intake Structure       | Shaft                             | Permanent Subsurface Impact |
| Road Improvement            | Concrete Batch Plant    | Outlet Structure       | Shaft Pad                         | Permanent Surface Impact    |
| Aqueduct                    | Control Structure       | Peat Storage           | Slurry/Grout Mixing Plant         | Temporary Surface Impact    |
| Construction Water Pipeline | Discharge Structure     | Pumping Plant          | Substation                        | RTM and Ring Levee          |
| RTM Conveyor                | Electrical Building     | Rail Depot             | Surge Basin                       | Ring Levee                  |
| Rail Spur                   | Fuel Station            | Sediment Drying Lagoon | Surge Tank                        | RTM Area                    |
| Runoff Discharge Pipe       | Fuel Storage            | Sedimentation Basin    | Topsoil Storage                   | Levee Improvement Area      |
| Tunnel                      | Intake Facility Grounds | Septic System          | Water Treatment and Storage Tanks |                             |



Sources: DCA, DWR

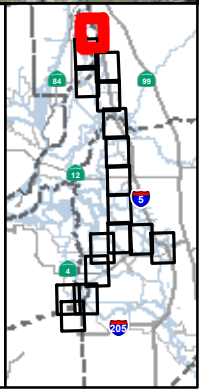
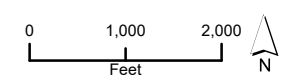
**Draft example mapbook for discussion purposes only.  
This mapbook is a scaled representation of the GIS data  
and only shows major facilities.  
(23 Dec 2021)**

**Figure: Index  
DC02gB Option 10b**



T:\W\GIS\38\GIS\_33\_00\GISRequest\_11\FID\Deliverable\_10\FENG156\_21\Mapbooks\ENG156\_DC02gB10b\_Mapbook.mxd 20211216 8:48:02 PM

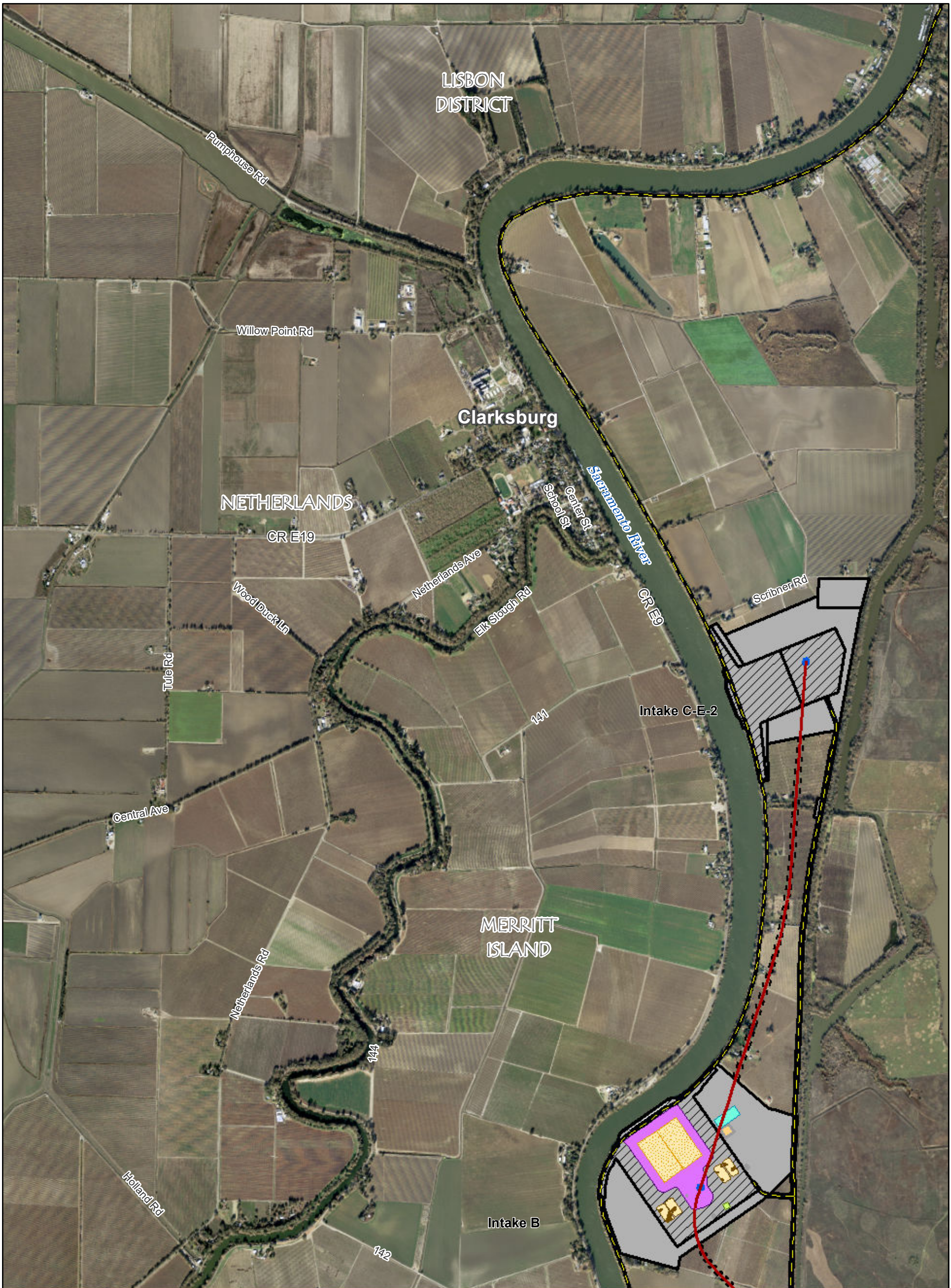
**Project Features**  
 Road Improvement



Source: DCA, DWR, ESRI Basemap Aerial Imagery

**Draft example mapbook for discussion purposes only.  
 This mapbook is a scaled representation of the GIS data  
 and only shows major facilities.  
 (23 Dec 2021)**

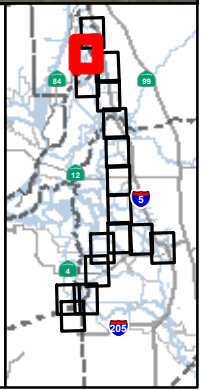
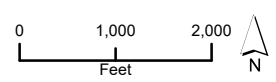
**Figure : Sheet 1 of 17  
 DC02gB Option 10b**



T:\W\GIS\38\GIS\_33\_00\GISRequest\_11\F\Deliverable\_10\F\ENG\156\_21\Mapbooks\ENG\156\_DC02gB10b\_Mapbook.mxd 20211216 8:48:28 PM

**Project Features**

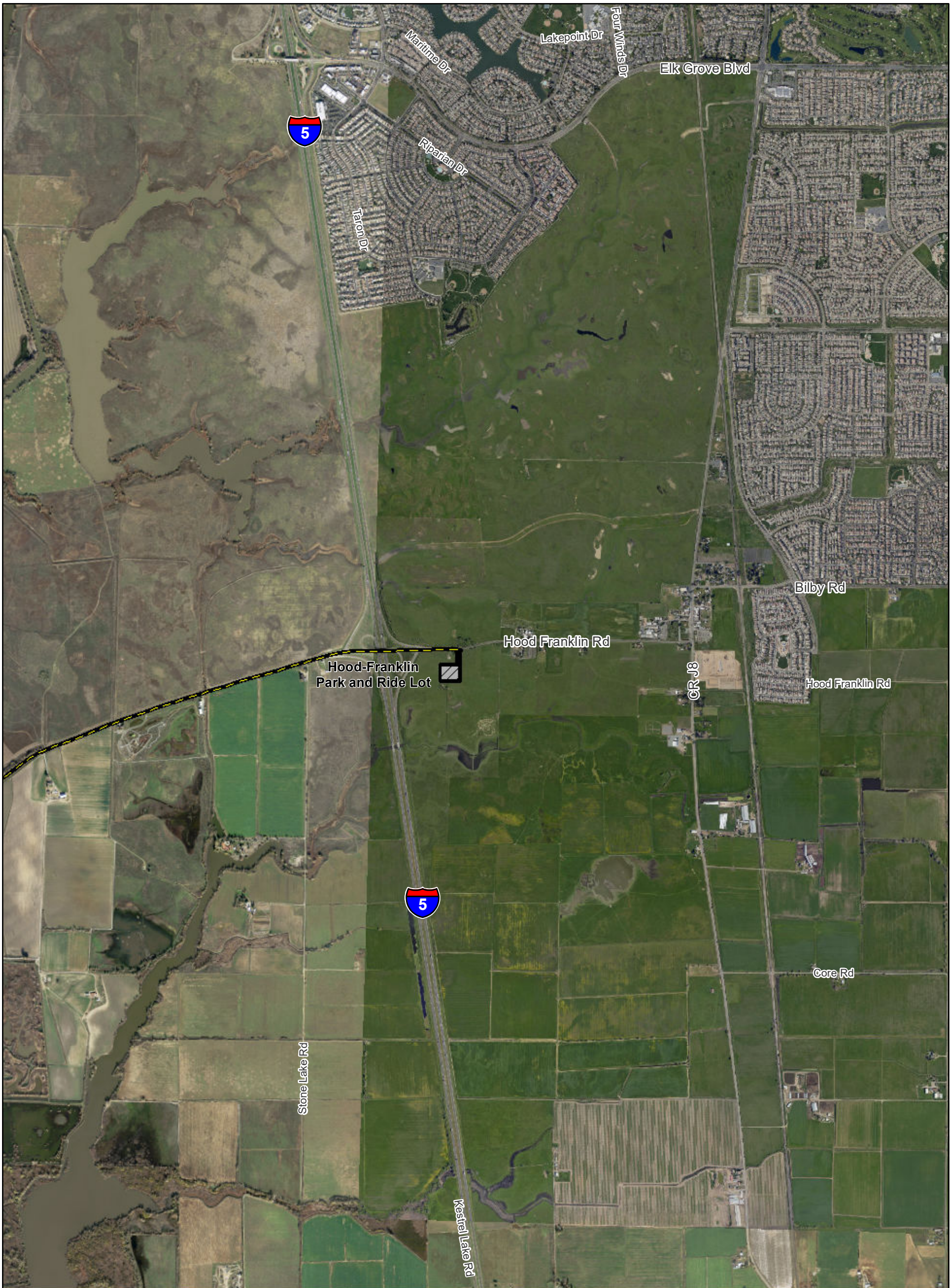
|                        |                           |                                   |                             |
|------------------------|---------------------------|-----------------------------------|-----------------------------|
| Road Improvement       | Fuel Station              | Septic System                     | Permanent Subsurface Impact |
| Tunnel                 | Intake Facility Grounds   | Shaft                             | Permanent Surface Impact    |
| Intake Structure       | Slurry/Grout Mixing Plant | Water Treatment and Storage Tanks | Temporary Surface Impact    |
| Sediment Drying Lagoon | Sedimentation Basin       |                                   |                             |



Source: DCA, DWR, ESRI Basemap Aerial Imagery

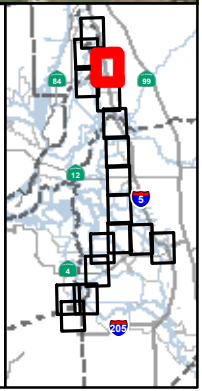
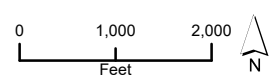
**Draft example mapbook for discussion purposes only.  
This mapbook is a scaled representation of the GIS data  
and only shows major facilities.  
(23 Dec 2021)**

**Figure : Sheet 2 of 17  
DC02gB Option 10b**



T:\W\GIS\8\GIS\_33\_00\GISRequest\_11\F\Deliverable\_10\F\ENG\156\_21\Mapbooks\ENG\_156\_DC02gB10b\_Mapbook.mxd 20211216 8:48:52 PM

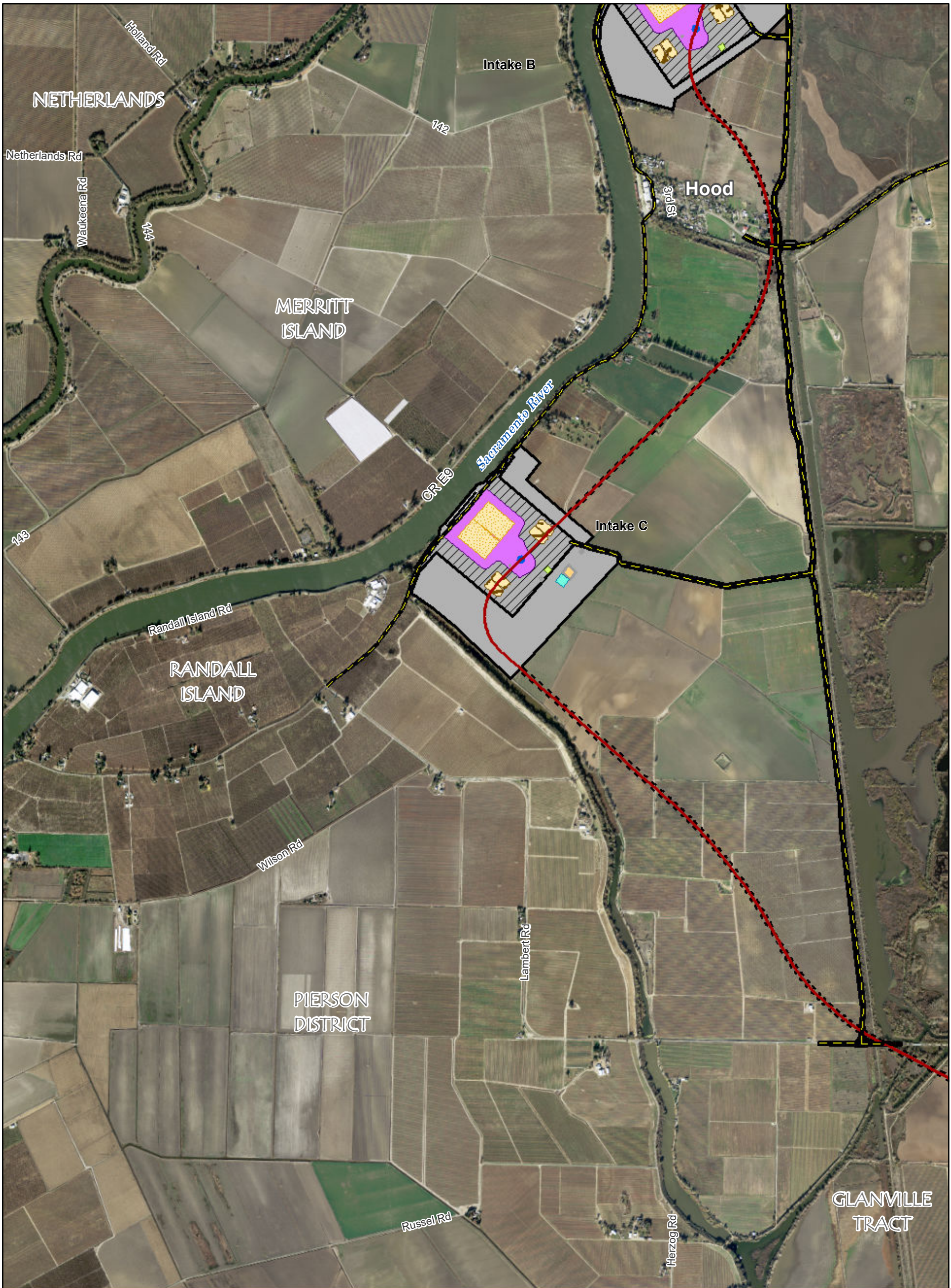
- Project Features**
- Road Improvement
  - Permanent Surface Impact
  - Temporary Surface Impact



Source: DCA, DWR, ESRI Basemap Aerial Imagery

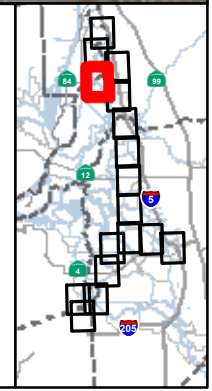
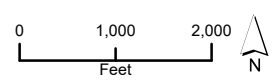
**Draft example mapbook for discussion purposes only.  
 This mapbook is a scaled representation of the GIS data  
 and only shows major facilities.  
 (23 Dec 2021)**

**Figure : Sheet 3 of 17  
 DC02gB Option 10b**



T:\W\GIS\38\GIS\_33\_00\GISRequest\_11\F\Deliverable\_10\F\ENG\156\_21\Mapbooks\ENG\156\_DC02gB10b\_Mapbook.mxd 20211216 8:49:18 PM

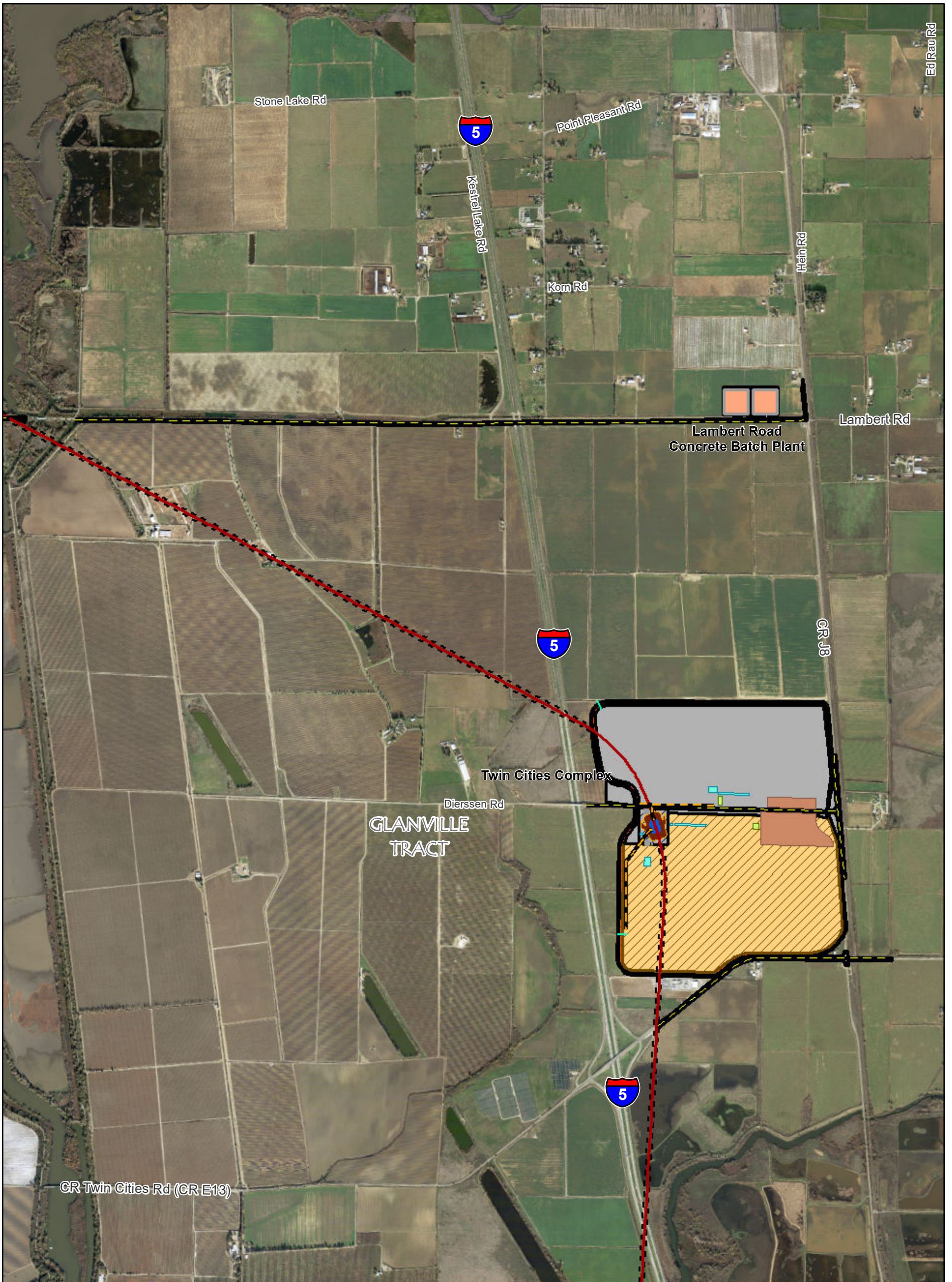
| Project Features       |                           |                                   |                             |
|------------------------|---------------------------|-----------------------------------|-----------------------------|
| Road Improvement       | Fuel Station              | Septic System                     | Permanent Subsurface Impact |
| Tunnel                 | Intake Facility Grounds   | Shaft                             | Permanent Surface Impact    |
| Intake Structure       | Slurry/Grout Mixing Plant | Water Treatment and Storage Tanks | Temporary Surface Impact    |
| Sediment Drying Lagoon | Sedimentation Basin       |                                   |                             |



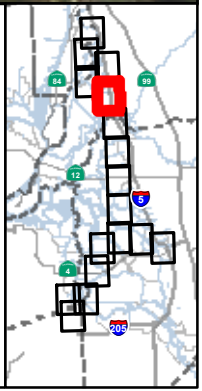
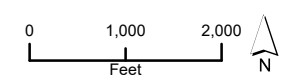
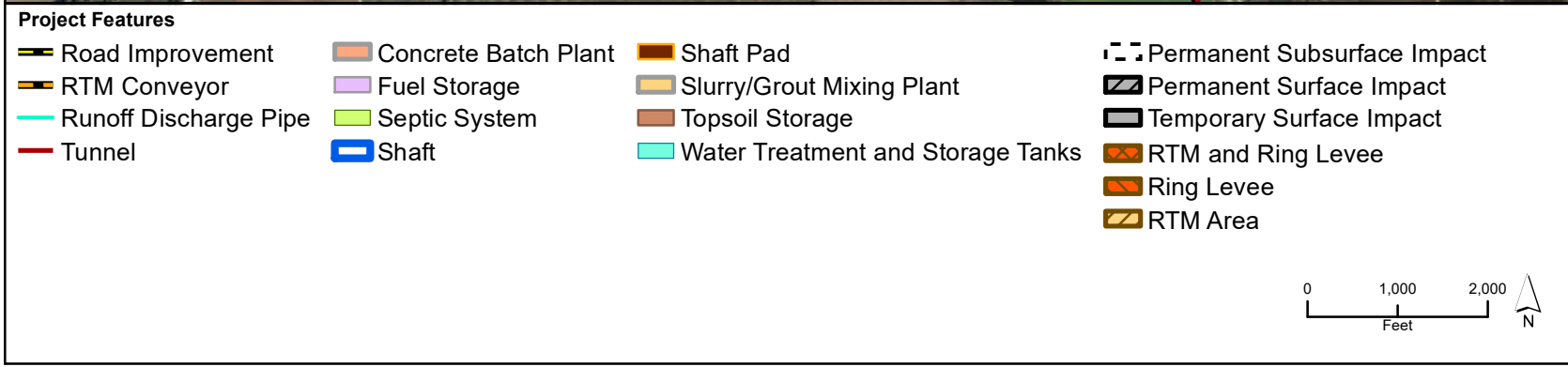
Source: DCA, DWR, ESRI Basemap Aerial Imagery

**Draft example mapbook for discussion purposes only.  
This mapbook is a scaled representation of the GIS data  
and only shows major facilities.  
(23 Dec 2021)**

**Figure : Sheet 4 of 17  
DC02gB Option 10b**



T:\W\GIS\38\GIS\_33\_00\GISRequest\_11\F\Deliverable\_10\F\ENG\156\_21\Mapbooks\ENG\156\_DC02gB10b\_Mapbook.mxd 20211216 8:49:49 PM



Source: DCA, DWR, ESRI Basemap Aerial Imagery

**Draft example mapbook for discussion purposes only.  
This mapbook is a scaled representation of the GIS data  
and only shows major facilities.  
(23 Dec 2021)**

**Figure : Sheet 5 of 17  
DC02gB Option 10b**





T:\W\GIS\38\GIS\_33\_00\GISRequest\_11\F\Deliverable\_10\F\ENG\156\_21\Mapbooks\ENG\156\_DC02gB10b\_Mapbook.mxd 20211216 8:50:46 PM

| Project Features      |              |                                   |                             |
|-----------------------|--------------|-----------------------------------|-----------------------------|
| Road Improvement      | Fuel Storage | Shaft Pad                         | Permanent Subsurface Impact |
| Runoff Discharge Pipe | Peat Storage | Water Treatment and Storage Tanks | Permanent Surface Impact    |
| Tunnel                | Shaft        |                                   | Temporary Surface Impact    |

Source: DCA, DWR, ESRI Basemap Aerial Imagery

**Draft example mapbook for discussion purposes only.  
 This mapbook is a scaled representation of the GIS data  
 and only shows major facilities.  
 (23 Dec 2021)**

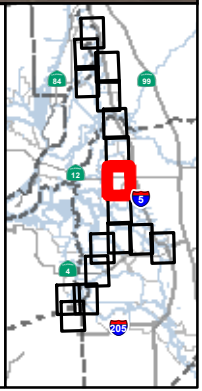
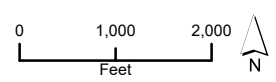
**Figure : Sheet 7 of 17  
 DC02gB Option 10b**



T:\W\GIS\38\GIS\_33\_00\GISRequest\_11\F\Deliverable\_10\F\ENG\156\_21\Mapbooks\ENG\156\_DC02gB10b\_Mapbook.mxd 20211216 8:51:18 PM

**Project Features**

- |                       |              |                                   |                             |
|-----------------------|--------------|-----------------------------------|-----------------------------|
| Road Improvement      | Fuel Storage | Shaft Pad                         | Permanent Subsurface Impact |
| Runoff Discharge Pipe | Peat Storage | Water Treatment and Storage Tanks | Permanent Surface Impact    |
| Tunnel                | Shaft        |                                   | Temporary Surface Impact    |



Source: DCA, DWR, ESRI Basemap Aerial Imagery

**Draft example mapbook for discussion purposes only.  
This mapbook is a scaled representation of the GIS data  
and only shows major facilities.  
(23 Dec 2021)**

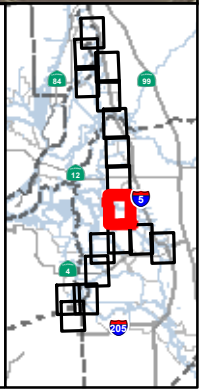
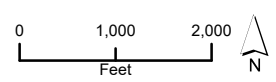
**Figure : Sheet 8 of 17  
DC02gB Option 10b**



T:\W\GIS\38\GIS\_33\_00\GISRequest\_11\F\Deliverable\_10\F\ENG\156\_21\Mapbooks\ENG\156\_DC02gB10b\_Mapbook.mxd 20211216 8:51:54 PM

**Project Features**

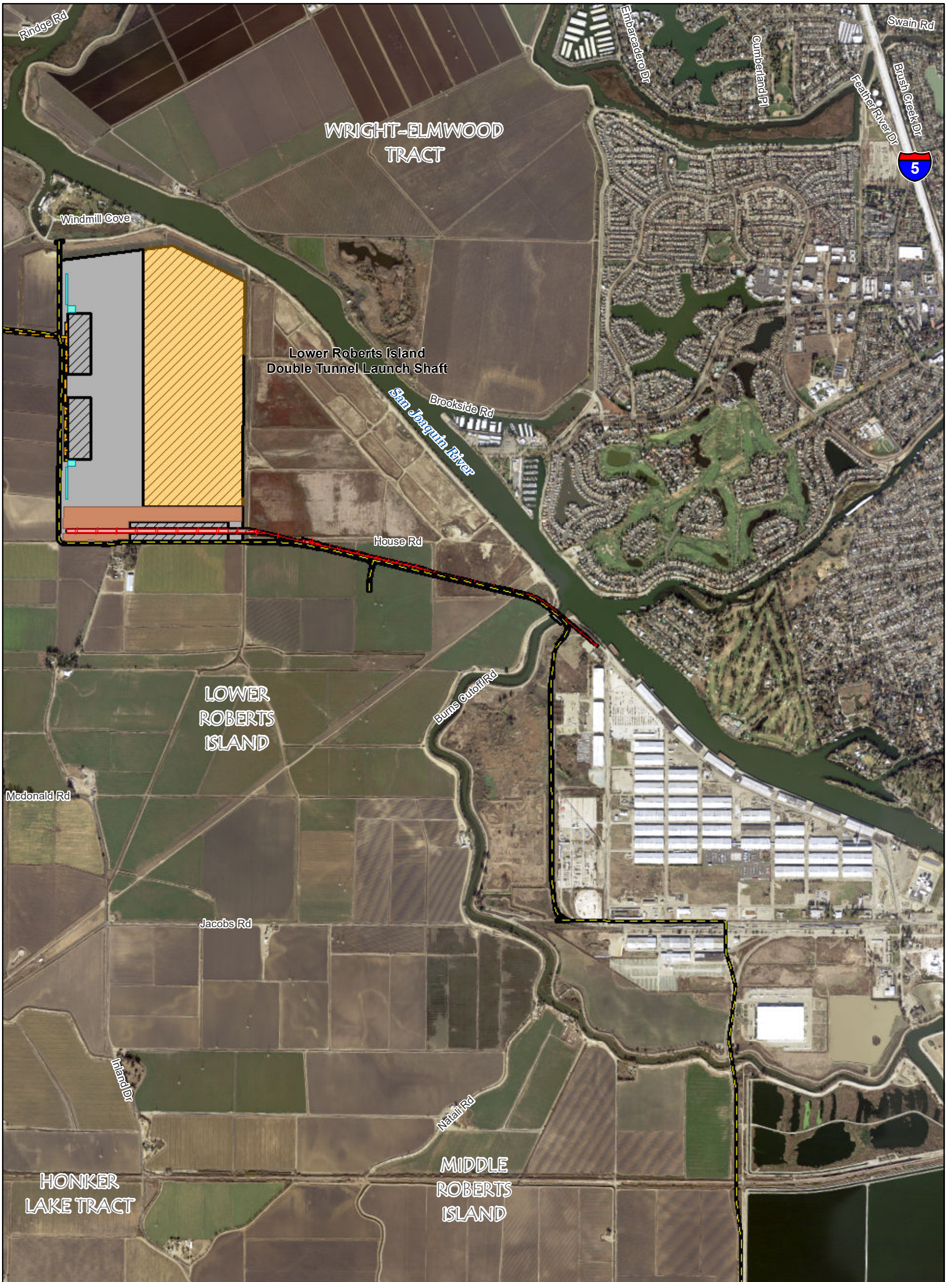
- |                       |              |                                   |                             |
|-----------------------|--------------|-----------------------------------|-----------------------------|
| Road Improvement      | Fuel Storage | Shaft Pad                         | Permanent Subsurface Impact |
| Runoff Discharge Pipe | Peat Storage | Water Treatment and Storage Tanks | Permanent Surface Impact    |
| Tunnel                | Shaft        |                                   | Temporary Surface Impact    |



Source: DCA, DWR, ESRI Basemap Aerial Imagery

**Draft example mapbook for discussion purposes only.  
This mapbook is a scaled representation of the GIS data  
and only shows major facilities.  
(23 Dec 2021)**

**Figure : Sheet 9 of 17  
DC02gB Option 10b**



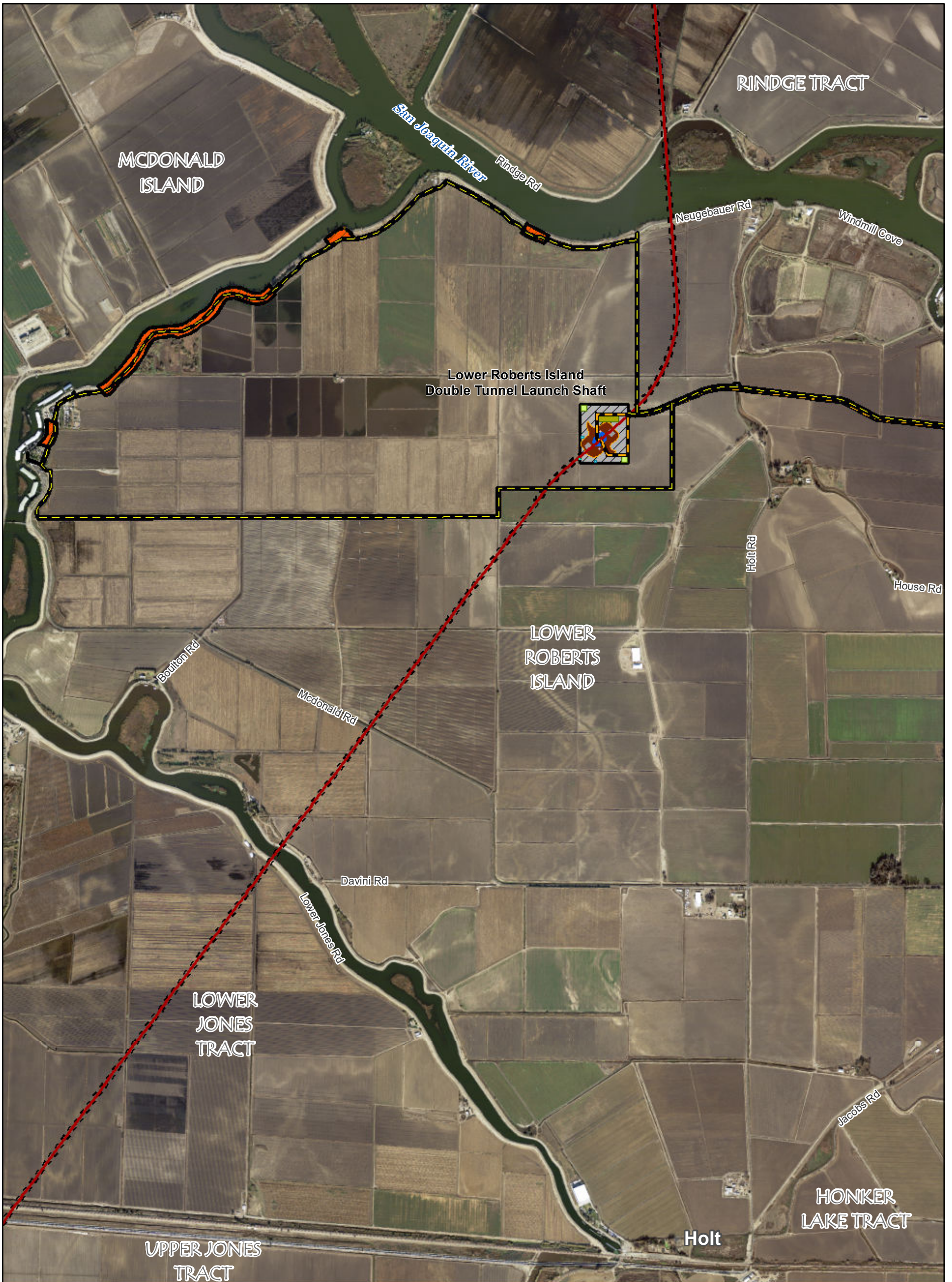
T:\W\GIS\38\GIS\_33\_00\GISRequest\_11\F\Deliverable\_10\F\ENG\156\_21\Mapbooks\ENG\_156\_DC02gB10b\_Mapbook.mxd 20211216 8:52:27 PM

|                         |                 |                                   |                          |
|-------------------------|-----------------|-----------------------------------|--------------------------|
| <b>Project Features</b> |                 |                                   |                          |
| Road Improvement        | Rail Depot      | Water Treatment and Storage Tanks | Permanent Surface Impact |
| RTM Conveyor            | Topsoil Storage |                                   | Temporary Surface Impact |
| Rail Spur               |                 |                                   | RTM Area                 |

Source: DCA, DWR, ESRI Basemap Aerial Imagery

**Draft example mapbook for discussion purposes only.  
This mapbook is a scaled representation of the GIS data  
and only shows major facilities.  
(23 Dec 2021)**

**Figure : Sheet 10 of 17  
DC02gB Option 10b**



T:\W\GIS\38\GIS\_33\_00\GISRequest\_11\F\Deliverable\_10\F\ENG\156\_21\Mapbooks\ENG\156\_DC02gB10b\_Mapbook.mxd 20211216 8:53:06 PM

| Project Features      |               |                                   |                             |
|-----------------------|---------------|-----------------------------------|-----------------------------|
| Road Improvement      | Batch Plant   | Shaft                             | Permanent Subsurface Impact |
| RTM Conveyor          | Fuel Storage  | Shaft Pad                         | Permanent Surface Impact    |
| Runoff Discharge Pipe | Peat Storage  | Slurry/Grout Mixing Plant         | Temporary Surface Impact    |
| Tunnel                | Septic System | Water Treatment and Storage Tanks | Levee Improvement Area      |

Source: DCA, DWR, ESRI Basemap Aerial Imagery

**Draft example mapbook for discussion purposes only.  
This mapbook is a scaled representation of the GIS data  
and only shows major facilities.  
(23 Dec 2021)**

**Figure : Sheet 11 of 17  
DC02gB Option 10b**



T:\W\GIS\38\GIS\_33\_00\GISRequest\_11\F\Deliverable\_10\F\ENG\156\_21\Mapbooks\ENG\156\_DC02gB10b\_Mapbook.mxd 20211216 8:53:46 PM

| Project Features      |              |                                   |
|-----------------------|--------------|-----------------------------------|
| Road Improvement      | Fuel Storage | Shaft Pad                         |
| Runoff Discharge Pipe | Peat Storage | Water Treatment and Storage Tanks |
| Tunnel                | Shaft        |                                   |
|                       |              | Permanent Subsurface Impact       |
|                       |              | Permanent Surface Impact          |
|                       |              | Temporary Surface Impact          |
|                       |              | Levee Improvement Area            |

Source: DCA, DWR, ESRI Basemap Aerial Imagery

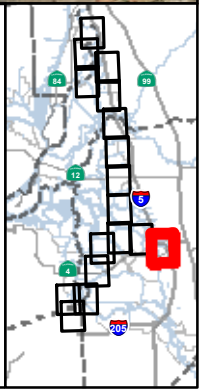
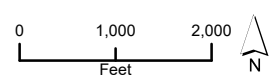
**Draft example mapbook for discussion purposes only.**  
**This mapbook is a scaled representation of the GIS data**  
**and only shows major facilities.**  
**(23 Dec 2021)**

**Figure : Sheet 12 of 17**  
**DC02gB Option 10b**



T:\W\GIS\81\GIS\_33\_00\GISRequest\_11\FID\Deliverable\_10\FE\ENG156\_21\Mapbooks\ENG156\_DC02gB10b\_Mapbook.mxd 20211216 8:54:20 PM

- Project Features**
- Permanent Surface Impact
  - Temporary Surface Impact



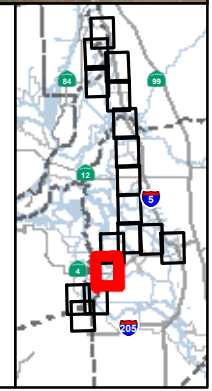
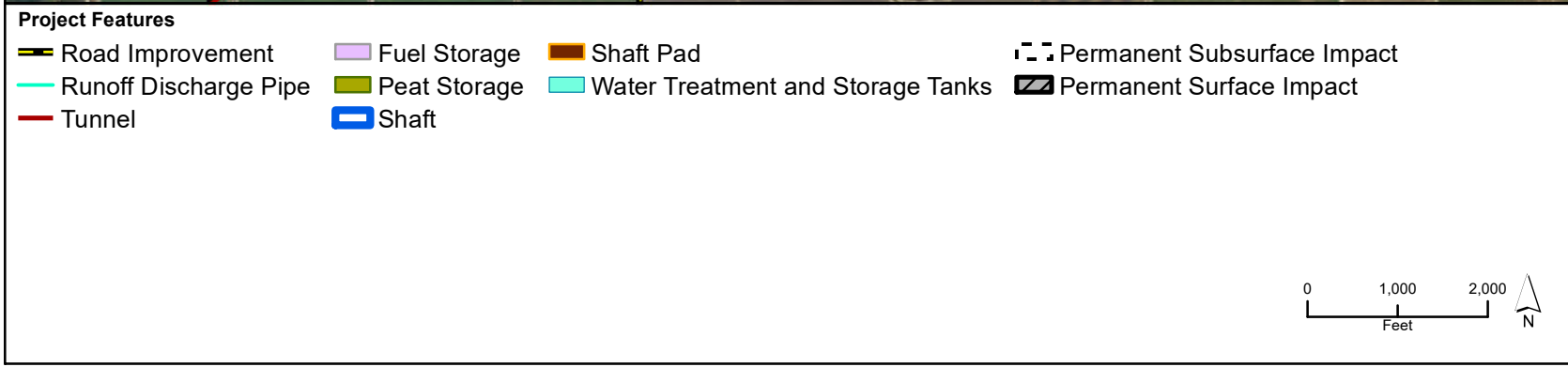
Source: DCA, DWR, ESRI Basemap Aerial Imagery

**Draft example mapbook for discussion purposes only.  
 This mapbook is a scaled representation of the GIS data  
 and only shows major facilities.  
 (23 Dec 2021)**

**Figure : Sheet 13 of 17  
 DC02gB Option 10b**



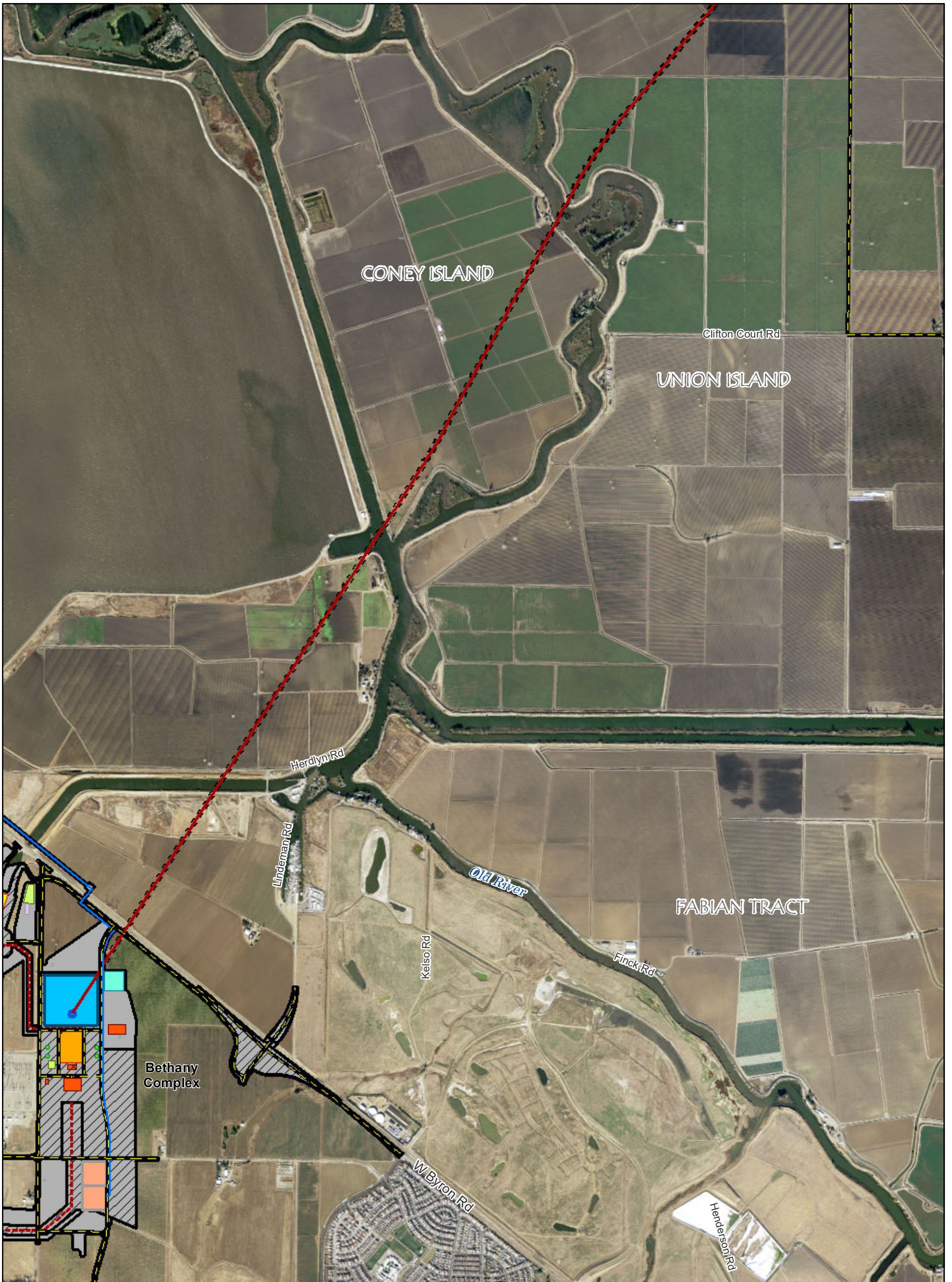
T:\W\GIS\38\GIS\_33\_00\GISRequest\_11\F\Deliverable\_10\F\ENG\156\_21\Mapbooks\ENG\156\_DC02gB10b\_Mapbook.mxd 20211216 8:54:54 PM



Source: DCA, DWR, ESRI Basemap Aerial Imagery

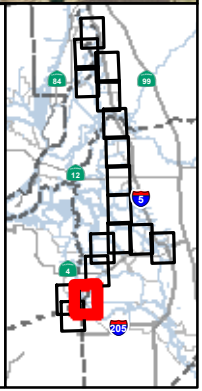
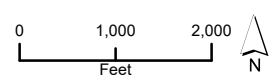
**Draft example mapbook for discussion purposes only.  
This mapbook is a scaled representation of the GIS data  
and only shows major facilities.  
(23 Dec 2021)**

**Figure : Sheet 14 of 17  
DC02gB Option 10b**



T:\W\GIS\38\GIS\_33\_00\GISRequest\_11\F\Deliverable\_10\F\ENG\156\_21\Mapbooks\ENG\156\_DC02gB10b\_Mapbook.mxd 20211216 8:55:26 PM

|                             |                             |                                   |
|-----------------------------|-----------------------------|-----------------------------------|
| <b>Project Features</b>     |                             |                                   |
| Road Improvement            | Concrete Batch Plant        | Shaft                             |
| Aqueduct                    | Control Structure           | Substation                        |
| Construction Water Pipeline | Electrical Building         | Surge Basin                       |
| Tunnel                      | Fuel Storage                | Surge Tank                        |
|                             | Pumping Plant               | Water Treatment and Storage Tanks |
|                             | Septic System               |                                   |
|                             | Permanent Subsurface Impact | Permanent Surface Impact          |
|                             | Temporary Surface Impact    |                                   |



Source: DCA, DWR, ESRI Basemap Aerial Imagery

**Draft example mapbook for discussion purposes only.  
This mapbook is a scaled representation of the GIS data  
and only shows major facilities.  
(23 Dec 2021)**

**Figure : Sheet 15 of 17  
DC02gB Option 10b**



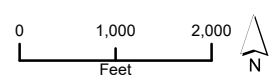
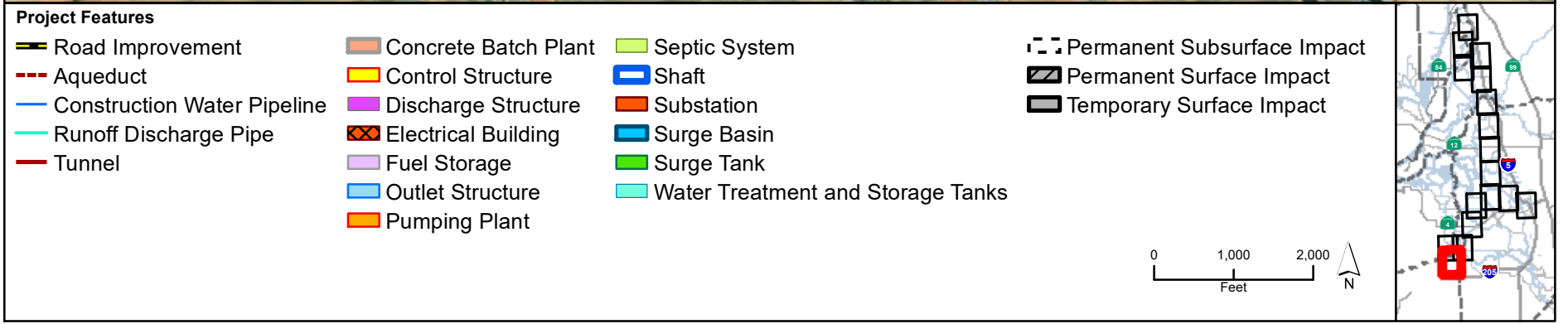
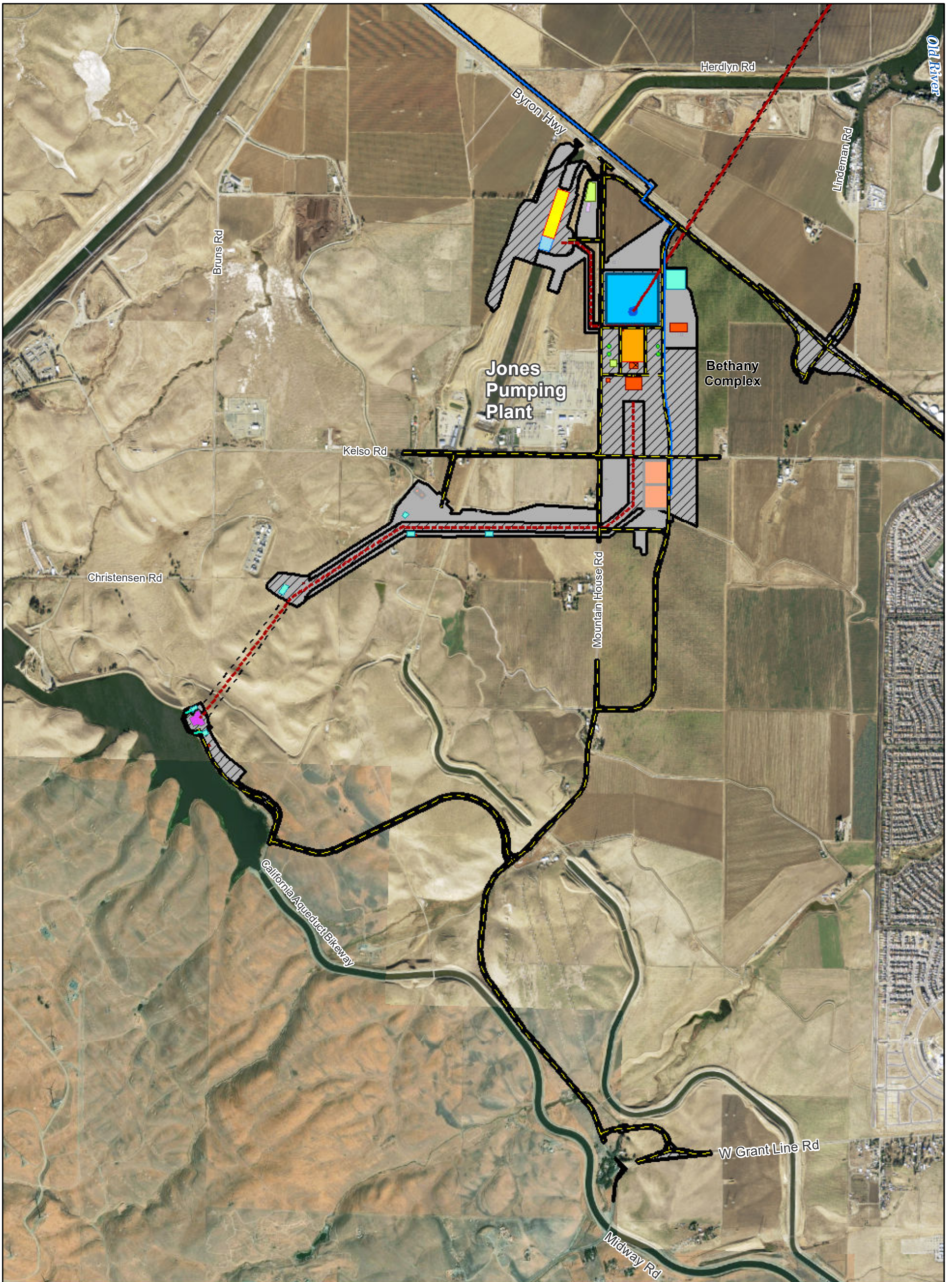
T:\W\GIS\38\GIS\_33\_00\GISRequest\_11\F\Deliverable\_10\F\ENG\156\_21\Mapbooks\ENG\_156\_DC02gB10b\_Mapbook.mxd 20211216 8:56:00 PM

| Project Features            |                      |                                   |                             |
|-----------------------------|----------------------|-----------------------------------|-----------------------------|
| Road Improvement            | Concrete Batch Plant | Septic System                     | Permanent Subsurface Impact |
| Aqueduct                    | Control Structure    | Shaft                             | Permanent Surface Impact    |
| Construction Water Pipeline | Electrical Building  | Substation                        | Temporary Surface Impact    |
| Tunnel                      | Fuel Storage         | Surge Basin                       |                             |
|                             | Outlet Structure     | Surge Tank                        |                             |
|                             | Pumping Plant        | Water Treatment and Storage Tanks |                             |

Source: DCA, DWR, ESRI Basemap Aerial Imagery

**Draft example mapbook for discussion purposes only.  
This mapbook is a scaled representation of the GIS data  
and only shows major facilities.  
(23 Dec 2021)**

**Figure : Sheet 16 of 17  
DC02gB Option 10b**



T:\W\GIS\38\GIS\_33\_00\GISRequest\_11\F\Deliverable\_10\F\ENG\156\_21\Mapbooks\ENG\156\_DC02gB10b\_Mapbook.mxd 20211216 8:56:33 PM

Source: DCA, DWR, ESRI Basemap Aerial Imagery

**Draft example mapbook for discussion purposes only.  
This mapbook is a scaled representation of the GIS data  
and only shows major facilities.  
(23 Dec 2021)**

**Figure : Sheet 17 of 17  
DC02gB Option 10b**